

30
YEARS

**CELEBRATING
BIOETHICS LEADERSHIP
AND EXCELLENCE**

TABLE OF CONTENTS

FEATURE SECTION

1 CELEBRATING 30 YEARS OF BIOETHICS LEADERSHIP AND EXCELLENCE, PLANNING FOR THE FUTURE

- 2 Timeline
- 6 Introduction
- 6 Research Ethics
- 9 Public Health Ethics
- 11 Global Bioethics
- 14 Science Ethics
- 17 Clinical Ethics
- 19 Public Bioethics
- 21 Educational Offerings

YEAR IN REVIEW

24 SELECT HIGHLIGHTS

- 24 Celebrating the Careers of Two Berman Institute Founding Faculty
- 26 Faden Receives Greenwall Award for Excellence in Mentorship
- 26 Continuing to Build Permanent Bioethics Infrastructure in Greece
- 27 Pulse Oximeters Infrequently Tested by Manufacturers on Diverse Sets of Subjects
- 28 Levi Symposium Addresses Healthcare's Impact on the Environment
- 28 New Casebook Addresses Health Research Ethics in Southeast Asia
- 29 Navigating the AI Landscape: Universities Unite for Ethical Innovation
- 29 PhD Student Caleigh Propes Publishes Article in Influential Journal
- 30 Berman Institute Faculty Selected for JHU Nexus, Discovery Awards to Pursue Interdisciplinary Projects
- 30 Kass Named Interim Department Chair at Bloomberg School of Public Health
- 31 Progress Continues on Institute's New Home

32 DRACOPOULOS-BLOOMBERG IDEAS LAB UPDATES

- 32 New Film Brings Viewers Inside Homes of Families with Children with Medical Complexity
- 33 Harnessing the Power of Nurses: A Film Collaboration with the R3 Resilient Nurses Initiative of Maryland
- 33 Moral Histories Project Continues to Grow in Size and Scope
- 34 Bringing Bioethics Into Classrooms Everywhere
- 35 Expanding the Lab's Educational and Scholarly Outreach
- 35 Expanding Bioethics Storytelling in Latin America by Providing Resources and Mentorship

36 SCHOLARSHIP AND RESEARCH

38 IN THE NEWS

SUPPORT AND LEADERSHIP

- 43 Michael Nottidge Joins Advisory Board
- 43 Donor Profile: Lee-Lee Ellis
- 44 National Advisory Board
- 44 2024-2025 Philanthropic Supporters

DIRECTOR'S LETTER



It is my pleasure to share with you this special version of the Berman Institute of Bioethics Annual Report that celebrates all that we have achieved in the last year, as well as throughout our entire 30-year history. As we observe this milestone anniversary throughout the upcoming year, we'll reflect on those achievements while also envisioning possibilities for what is to come.

The Berman Institute's legacy over its first three decades has been its leadership in helping to establish a young and interdisciplinary field of research, scholarship, education, service, and outreach. As bioethics has grown from its roots in medical ethics and philosophy, the Berman Institute's faculty led the expansion first into the realm of public health and subsequently into a broad range of interdisciplinary work, with a wide range of real-world applications. Today, bioethics is an integral part not only of clinical medical practice and public health, but also science, research, policy-making, and virtually every area where new biomedical and technological innovations raise important ethical and policy issues.

Despite this record of accomplishment and success, we stand at an uncertain moment in our history. In recent months, we have witnessed unprecedented cuts to federal funding for research and education across biomedicine, public health, science and health policy, and the humanities. For an institution like the Berman Institute of Bioethics, which stands at the intersection of all these areas, these cuts pose more than a financial challenge—they threaten our mission when society needs what we do more than ever.

In these difficult times, it is heartening to know that the Berman Institute continues to benefit from our engaged and generous philanthropic supporters. Despite the decline of funds from sources that we have successfully competed for over the last 30 years, and with no respite in sight, we have been able to rely on you to help realize our shared commitment to the betterment of human life by addressing ethical issues in science, clinical care, and public health, locally and globally. Moreover, your support affirms an important message in the fact of federal funding cuts: our shared belief that ethics must remain at the heart of scientific and biomedical progress.

As you will see in the pages that follow, our ambitions for the future draw upon the Berman Institute's three decades of remarkable achievement and chart a course that will keep us at the global forefront in the field of bioethics.

Sincerely,



Jeffrey P. Kahn, PhD, MPH

ANDREAS C. DRACOPOULOS DIRECTOR
ROBERT HENRY LEVI AND RYDA HECHT
PROFESSOR OF BIOETHICS AND PUBLIC POLICY
JOHNS HOPKINS BERMAN INSTITUTE OF BIOETHICS

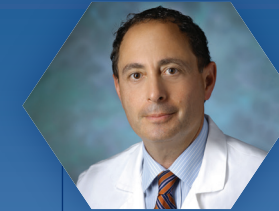
30 YEARS

During its 30-year history the Berman Institute's people and programs have made an immeasurable impact on humanity. It has grown into a world leader in the field of bioethics. This timeline highlights a few of the institutional milestones that have marked that progress.



NANCY KASS appointed inaugural Phoebe R. Berman Professor of Bioethics and Public Health in Johns Hopkins Medicine and School of Public Health

INSTITUTIONAL REQUIREMENT adopted to include at least one Berman Institute faculty member on all Johns Hopkins Medicine and School of Public Health Institutional Review Boards



JEREMY SUGARMAN appointed inaugural Harvey M. Meyerhoff Professor in Bioethics

HINXTON GROUP created



JHU President WILLIAM BRODY announces University-wide Bioethics Week featuring keynote address on ethics and science by Michael Crichton



HARVEY M. "BUD" MEYERHOFF named Chair of National Advisory Board



First students in HEALTH POLICY AND ETHICS track graduate with doctoral degrees from the School of Public Health



FADEN AND WAGLEY

BIOETHICS INSTITUTE ESTABLISHED as a Johns Hopkins University-wide institute with director reporting directly to the Provost

RUTH FADEN named Director and inaugural Philip Franklin Wagley Chair in Biomedical Ethics



MORRIS OFFIT, outgoing Chair of the Johns Hopkins Board of Trustees, launches National Advisory Board

WHITE HOUSE ADVISORY COMMITTEE ON HUMAN RADIATION EXPERIMENTS, chaired by Faden, issues its final report

1995

1996

1997

1999



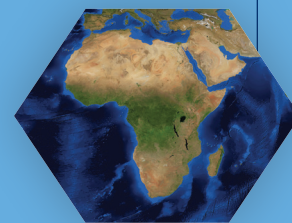
Institute renamed in honor of PHOEBE BERMAN following her landmark gift

GREENWALL FELLOWSHIP in Bioethics and Health Policy Program inaugurated

ROBERT H. LEVI Leadership Symposium in Bioethics and Health Policy established



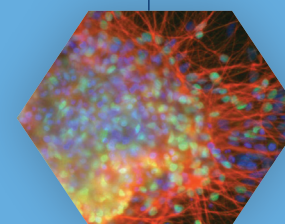
Johns Hopkins FOGARTY AFRICAN BIOETHICS Training Program established



2000

2001

STEM CELL Policy and Ethics Program established



2002

2004



Program on ETHICS IN CLINICAL PRACTICE established in conjunction with JHU School of Medicine residency programs

ALEX LEVI named Chair of National Advisory Board



2006

DEERING HALL dedicated, providing the Institute a permanent and independent home



JEFFREY KAHN appointed inaugural Robert Henry Levi and Ryda Hecht Levi Professor in Bioethics and Public Policy





CYNDA HYLTON RUSHTON appointed inaugural Anne and George L. Bunting Professor of Clinical Ethics



RUTH FADEN appointed inaugural Andreas C. Dracopoulos Director, nation's first endowed bioethics directorship



JEFFREY KAHN named Andreas C. Dracopoulos Director of the Berman Institute

Berman Institute awarded an NIH GRANT as a Center of Excellence for Ethical, Legal, and Social Implications Research in Genomics and Infectious Disease



HANNA PICKARD named Bloomberg Distinguished Professor of Philosophy and Bioethics

FUNDS PLEDGED to create Professorship of Education in Bioethics in honor of Ruth Faden



GLOBAL INFECTIOUS DISEASE ETHICS COLLABORATIVE created in collaboration with the University of Oxford



Ground broken for new **HENRIETTA LACKS BUILDING**



STEPHANIE MORAIN named inaugural Dracopoulos Rising Professor in Bioethics

2012

2013

2014

2015

2016

2018

2019

2020

2021

2023

2024

2025

HECHT-LEVI FELLOWSHIP PROGRAM created, providing a two-year postdoctoral fellowship focusing on preparing trainees for careers in academic bioethics



Monthly case presentation and discussion series, **ETHICS FOR LUNCH**, initiated at Johns Hopkins Hospital

MASTER OF BIOETHICS Degree Program launched



Plans announced for construction of new interdisciplinary building adjacent to Deering Hall, to be named in honor of **HENRIETTA LACKS**

RUTH R. FADEN ENDOWMENT for Education in Bioethics established by bequest from Alex and Vicki Levi



CREATION OF THE DRACOPOULOS-BLOOMBERG IDEAS LAB launches Public Bioethics Program

Faculty collaborate with academic colleagues and policymakers, locally to globally, to help ensure an **ETHICAL PUBLIC HEALTH RESPONSE TO COVID-19**



JEFFREY KAHN reappointed to second term as Andreas C. Dracopoulos Director of the Berman Institute



Program in **AI ETHICS AND GOVERNANCE** launched

CELEBRATING THREE DECADES OF LEADERSHIP AND EXCELLENCE IN BIOETHICS

Since its origin as a small, diverse collection of scholars with shared interests in the ethics of health care and science, the Berman Institute of Bioethics has grown over the past three decades into a leader that helps shape policy and practice worldwide.

“With the creation of the Berman Institute 30 years ago, Johns Hopkins formally recognized how important it is for scholars to think systemically and critically about the ethics of health care, public health, and biomedical and behavioral research,” said Johns Hopkins University President Ronald J. Daniels.

“A truly interdisciplinary center, the Institute brings together expertise from across the University to collaborate and contribute substantially to the world of ideas that advance society and improve people’s lives.”

PLANNING FOR THE FUTURE

Shaped by visionary leadership and volunteer supporters, and sustained by brilliant minds that continue to define a vital and ever-evolving field, the Berman Institute of Bioethics puts ethics into action to produce real-world impact.

Today, as the Institute proudly commemorates a remarkable history of achievement, it also looks forward with focus and optimism to the road ahead.

RESEARCH ETHICS

The Berman Institute is a worldwide institutional leader in research ethics. We are recognized both for our sustained expertise in foundational, “evergreen” issues in research ethics and in our ability to develop expertise and authority in emerging issues. Throughout, our work is grounded in a commitment to real-world influence and application.

30 YEARS OF ACHIEVEMENT

The Berman Institute has played a pivotal role in shaping contemporary research ethics through scholarship, policy influence, and global partnerships. Its contributions have advanced protections for human subjects, strengthened ethical oversight systems, and informed best practices across clinical research, public health, and emerging biotechnologies.

Our faculty members are internationally recognized leaders in foundational issues in research ethics, including informed consent and its limits; justice, including both exploitation and just access; research oversight; the ethics of clinical trials; and global health research.

Historically, as new ethical challenges have emerged, our faculty have responded and developed expertise in a variety of areas. These include pragmatic clinical trials and learning health systems; HIV/AIDS prevention research; human stem cell science; research during pregnancy; research in resource-constrained countries and contexts; vaccine research and development; and the ethical, legal, and social issues surrounding

*THE INSTITUTE HAS BEEN AT THE
FOREFRONT OF ADDRESSING
ETHICAL CHALLENGES IN
EMERGING TECHNOLOGIES*

emerging technologies, including data science and artificial intelligence (AI).

The Institute has become a leading center for advancing ethical standards in human subjects research, developing frameworks that guide responsible inquiry in both academic and industry settings. Its faculty have produced foundational scholarship clarifying principles such as informed consent, risk-benefit assessment, community engagement, and the obligations of researchers during and after studies. Through interdisciplinary collaboration, the Institute has helped translate abstract ethical norms into concrete guidance adaptable to evolving scientific contexts, including genetic research, global health trials, and digital data studies.

The Berman Institute made critical contributions in research ethics policy. Faculty have long been sought out for numerous roles related to their research ethics expertise, including service on committees for the US Centers for Disease Control and Prevention, US National Institutes of Health, US National Academies, and World Health Organization; the Global Forum on Bioethics in Research; institutional review boards (IRBs) and data safety monitoring boards; and on the editorial boards of relevant scholarly journals. Faculty have served as leaders within preeminent research ethics organizations and other bodies, such as Public Responsibility in Medicine and Research, the Association for the Accreditation of Human Research Protection

Programs, and the US Department of Health and Human Services Secretary’s Advisory Committee on Human Research Protections.

A hallmark achievement has been the Institute’s sustained work on enhancing IRB performance. In addition to serving on every Johns Hopkins School of Medicine IRB, faculty have conducted empirical studies on how IRBs function—identifying sources of variability, delays, and inconsistency—and proposing reforms to improve efficiency and participant protection. This research has informed national conversations about streamlining ethics review while maintaining rigorous safeguards.

Internationally, the Berman Institute has partnered with institutions in Africa, Asia, and Latin America to develop locally grounded ethical frameworks for clinical trials, community engagement strategies, and capacity-building programs for ethics committees. These collaborations have strengthened protections in settings where research is rapidly expanding but regulatory infrastructures may be limited.

The Institute has been at the forefront of addressing ethical challenges in emerging technologies. Faculty have examined the implications of genomic sequencing, artificial intelligence in health research, digital surveillance tools, and gene-editing techniques—producing guidance that helps guide responsible use, promotes transparency, and safeguards vulnerable populations.

RESEARCH ETHICS: THE ROAD AHEAD

Through scholarship, policy engagement, and international collaboration, the Berman Institute has helped set enduring standards for responsible research worldwide. To help maintain its global leadership, over the next five years the Berman Institute plans to:

- Maintain existing and explore future “core” ethics roles on large, cooperative sponsored projects;
- Highlight our expertise to JHU faculty outside the Berman Institute, allowing collaboration on other colleagues’ grants where additional research ethics expertise is of value;
- Maintain representation of Berman Institute faculty on the IRBs of both Johns Hopkins Medicine and the Bloomberg School of Public Health;
- Expand engagement with the clinical Research Ethics Consultation Collaborative (RECS) by supporting evaluation of challenging topics and identifying a broader group of collaborators for translating RECS work into scholarship; and
- Identify opportunities for junior and mid-career faculty to be considered for leadership in nationally recognized research ethics bodies.

HISTORIC HIGHLIGHT: SHAPING ETHICAL CONDUCT OF HUMAN RESEARCH ACROSS DECADES OF SCIENTIFIC CHANGE

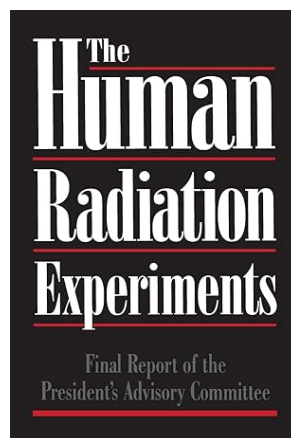
Dating back to before its official founding, the Berman Institute has stood at the center of national conversations about the ethical conduct of human research. In 1994, President Bill Clinton established the Advisory Committee on Human Radiation Experiments (ACHRE) to examine government-sponsored experiments conducted from the 1940s through the mid-1970s. Led by Ruth Faden and

including another half-dozen experts who already were part of or would go on to join the Institute’s faculty, the committee convened historians, clinicians, legal scholars, public health experts, and policy-makers to reconstruct relevant events, evaluate whether human subjects were harmed or wronged, and recommend changes to federal oversight.

ACHRE delivered its final report at the White House in 1995, setting a landmark precedent for transparency, accountability, and public scrutiny in research ethics. Its influence helped reinforce cornerstones of contemporary human subjects research, including expectations for informed consent, regulatory protections, and ethical review.

More than a quarter-century later, Berman Institute scholars

continue to reshape these same foundations as health care undergoes a new transformation, including leading pioneering work on the ethical challenges of Learning Health Systems, models of health care that continuously collect and analyze real-world clinical data to improve future care. Because learning activities are embedded directly within clinical practice, they blur traditional boundaries between research and treatment, raising fresh questions about consent, risk, patient engagement, and regulatory oversight. Berman Institute researchers have put forward frameworks for ethically integrating learning systems into healthcare to guide policymakers, health system leaders, and research regulators seeking to balance innovation with moral responsibility.



A MAJOR AREA OF INFLUENCE HAS BEEN THE ETHICS OF INFECTIOUS DISEASE CONTROL

PUBLIC HEALTH ETHICS

The Berman Institute has significantly shaped the field of public health ethics by advancing foundational concepts, informing policy at national and global levels, and developing practical frameworks for ethically grounded public health action. Its scholarship addresses the core tensions between individual liberty and collective welfare, moral responsibilities of governments and institutions during crises, and methods to craft health policies rooted in ethics. Through interdisciplinary research, policy engagement, and global partnerships, the Institute has contributed to defining the ethical contours of modern public health practice.

30 YEARS OF ACHIEVEMENT

The Institute has produced pioneering work on the ethical foundations of public health, articulating principles such as proportionality, least infringement, reciprocity, and transparency. Its scholarship has clarified when and how public health authorities may restrict individual freedoms in service of communal well-being, and what obligations institutions owe to the public when imposing such measures.

A major area of influence has been the ethics of infectious disease control. The Berman Institute’s faculty have examined quarantine and isolation policies, vaccine distribution, antiviral allocation strategies,

data sharing during outbreaks, and the responsibilities of governments to protect vulnerable populations. Their work has shaped ethical responses to outbreaks—including COVID-19, SARS, H1N1 influenza, Ebola, Zika, and other global health emergencies—by helping to develop strategies for triage and scarce resource allocation, ethical frameworks for crisis standards of care, and best practices for public engagement in emergency planning. These contributions have supported health systems, policymakers, and international organizations in designing responses that protect both public health and social justice.

Faculty have explored the moral implications of health disparities, structural determinants of health, and the ethical responsibilities of societies to address injustices rooted in poverty, racism, environmental exposures, and unequal access to care. Their policy influence has helped embed ethical considerations into the fabric of public health governance.

Educational contributions are another area of strength. The Institute has developed training programs that equip public health practitioners, clinicians, and policymakers with the tools to navigate moral challenges in real-world public health decision-making.

PUBLIC HEALTH ETHICS: THE ROAD AHEAD

Through its leading scholarship, policy engagement, and commitment to equity, the Berman Institute has helped establish public health ethics as a rigorous field essential to protecting and promoting health in an interconnected world. To sustain its prominence, goals for the next five years include:

- Seek support for policy-focused public health ethics projects, from government, foundations, and philanthropic sources;
- Continue to build on the Institute's work on global

health ethics through ongoing support of the Global Infectious Disease Ethics project (GLIDE) and new funding for spin-off and related projects;

- Expand public-facing programs in ethics and public health policy, taking advantage of convening opportunities at the Hopkins Bloomberg Center in Washington, DC;
- Create programs for convening relevant stakeholders around pressing ethics and public health issues, to fill the gap created by reduced government funding of advisory panels and committees.

HISTORIC HIGHLIGHT: REAL-TIME RESPONSE TO ETHICAL CHALLENGES RAISED BY A GLOBAL PANDEMIC

From the very first days of the COVID-19 pandemic, the Berman Institute vaulted into action, striving to help shape an international public health response that was ethically informed and effective. Through years of experience and scholarship, and tested through multiple threatened and actual epidemics, Berman Institute faculty led research to identify ethics principles and guide the actions of governments and other institutions during the global crisis. The Institute's responses included the following activities:

Johns Hopkins released *Digital Contact Tracing for Pandemic Response*, a comprehensive report led by the Berman Institute in collaboration with colleagues across the University and leading experts worldwide. The report sought to help governments, technology developers, businesses, institutional leaders, and the public make responsible decisions around use of digital contact tracing technology,

including smartphone apps and other tools, to fight COVID-19. It was downloaded almost 150,000 times by readers from 134 countries on six continents.

Berman Institute faculty co-authored a report, *Interim Framework for COVID-19 Vaccine Allocation and Distribution in the United States*, that provided an ethical framework for making decisions about allocation and distribution of a COVID-19 vaccine during the initial period when such a vaccine was first authorized for use and still in limited supply.

A multidisciplinary team, led by Berman Institute faculty in conjunction with the JHU School of Education, launched a website that provided a range of tools dedicated to assessing and guiding K-12 school reopening plans across the United States, including a School Reopening Policy Tracker that provided real-time analysis of the latest guidance documents from every state.

Berman Institute faculty



THE COMIT GLOBAL VACCINATION POLICY TRACKER

launched the COVID-19 Maternal Immunization Tracker (COMIT), a website that was the first resource providing a global snapshot of public health policies that shaped access to COVID-19 vaccines for pregnant and lactating women.

Since the pandemic, Berman Institute faculty members have been engaged in a 3-year project, Enabling Ethical Analysis and Public Justification in State-Level Pandemic Responses in the United States, that will draw upon the experiences of state governments during the COVID-19 pandemic to create ethics guidance and tools for policymakers to use during future public health emergencies.



ONE OF THE INSTITUTE'S HALLMARK ACHIEVEMENTS IS ITS ROBUST ENGAGEMENT IN ETHICS CAPACITY STRENGTHENING WORLDWIDE

GLOBAL BIOETHICS

The Johns Hopkins Berman Institute of Bioethics has a robust history of expertise in global bioethics and is a leading institution for engagement in international collaborative bioethics training, research, and service. The Institute's leadership position attracts interested faculty, students, fellows, staff, and partners both within and outside the University for content expertise and a supportive environment for international collaboration.

30 YEARS OF ACHIEVEMENT

The Berman Institute of Bioethics has established itself as a major force in global bioethics through high-quality scholarship, training and service—in collaboration with partners around the world—while strengthening mutual understanding of and capacity to address global bioethics challenges. Our faculty have contributed to international standards and ethical frameworks that guide research, clinical practice, and public health initiatives across diverse regions. The

Institute's work has shaped how global health programs address fairness, community engagement, and respect for local values while navigating the ethical complexity of cross-border collaborations.

One of the Institute's hallmark achievements is its robust engagement in ethics capacity strengthening worldwide. It has collaborated with universities, ministries of health, and research institutions in Africa, Asia, and Europe to develop education programs, train ethics committee members, and strengthen national regulatory systems. These long-term partnerships have supported the development of local expertise capable of guiding contextually grounded ethical review, ensuring that ethical standards are not imported wholesale but adapted to cultural and societal realities.

The Institute has been instrumental in advancing ethical principles that govern global health research and international public health responses. Its faculty

have helped articulate concepts such as global justice, the fair distribution of benefits from international research, the ethical responsibilities of sponsors and investigators working abroad, and the importance of building sustainable partnerships.

The Berman Institute has also played a leading role in shaping global health policy. Faculty members have served on expert committees for organizations such as the World Health Organization, the US National Academies, UNICEF, and other international bodies. Their guidance has informed policies on vaccine trial ethics, pandemic data sharing, obligations to research participants after study completion, and the ethical management of public health interventions during emergencies. Their work has been especially influential during global crises, helping establish norms for transparency and equity.

Additionally, the Institute has explored the ethics of global health implementation programs, from HIV

treatment and maternal health initiatives to nutrition, migration health, and humanitarian responses. Faculty have conducted field-based research on stakeholder engagement, power dynamics, cultural sensitivity, and the responsibilities of non-governmental organizations and global health funders.

GLOBAL BIOETHICS: THE ROAD AHEAD

The Berman Institute endeavors to be the world's leading institution and preferred partner for international, collaborative bioethics research, teaching, and service. To attain this goal, over the next five years the Berman Institute plans to:

- Cultivate even stronger partnerships with academic institutions, research organizations, governmental agencies, and multi-national organization worldwide;
- Prioritize field-leading research that addresses pressing global bioethical challenges;

- Conduct more interdisciplinary research projects in collaboration with international partners;
- Engage with policymakers, regulatory bodies, and international organizations to influence policy development and implementation;
- Provide evidence-based recommendations, expert consultations, and policy briefs on key bioethical issues to inform decision-making processes at the national and global levels;
- Establish a global bioethics “policy forum”;
- Continue to grow educational programs to meet the needs of both US and international learners;
- Continue to collaboratively engage in capacity-strengthening initiatives to support bioethics expertise and infrastructure in low- and middle-income countries (LMICs);
- Seek to empower LMIC researchers, ethicists, health care professionals, and institutions to effectively address bioethical challenges;
- Engage with relevant public and community-based organizations to further ground our work in lived experience, increase awareness about global bioethical issues, and promote cross-cultural ethical understanding in society;
- Further strengthen relationships with global health-focused units and leaders across all schools and divisions of the University; and
- Increase international representation on the Berman Institute National Advisory Board and consider becoming an “International” Advisory Board.

HISTORIC HIGHLIGHT: FORGING INTERNATIONAL BIOETHICS PARTNERSHIPS

For more than 25 years, the Berman Institute's Fogarty African Bioethics Postdoctoral Fellowship has trained more than 60 highly qualified professionals who have gone on to become leaders in bioethics research, scholarship, teaching, and policy development across Africa.

Funded by the Fogarty International Center of the US National Institutes of Health, the program provides an 18-month fellowship in global bioethics and international research ethics for fellows who first complete four months of in-depth bioethics training at the Berman Institute. The curriculum includes advanced

coursework and seminars in bioethics, research ethics, research methods, and international health; research proposal development; and individual mentorship. Fellows then return to their home countries to initiate independent research projects, followed by another three-plus months of training at the Berman Institute. Finally, fellows spend six months conducting independent research in their home countries and submit manuscripts for publication that emerge from their research.

Joseph Ali, director of the Fogarty Fellowship and Associate Director for Global Programs at the Berman Institute, said that

helping to prepare national leaders in bioethics is a key focus of the fellowship. “Sometimes Fogarty Fellows are the only individuals in their home countries to have postdoctoral training in bioethics. They are the founding generation of bioethics leaders in their nations,” he said.

Another way the Berman Institute fosters international bioethics collaboration is through partnerships with organizations around the world. For example, the Oxford-Johns Hopkins Global Infectious Disease Ethics Collaborative (GLIDE) provides a flexible collaborative platform for identifying and analyzing ethical issues arising in



BI FACULTY NANCY KASS, JOSEPH ALI, AND JEFFREY KAHN, AND THE UNIVERSITY OF OXFORD'S MICHAEL PARKER PRESENT NELSON SEWANKAMBO WITH THE INAUGURAL GLIDE GLOBAL HEALTH ETHICS LEADERSHIP AWARD IN 2022.

infectious disease treatment, research, response, and preparedness, through the lens of global health ethics.

Bringing together scholars, trainees and partners from around the world, GLIDE conducts both

responsive research on pressing issues and forward-looking projects with longer timeframes. GLIDE also organizes the Oxford Global Health and Bioethics International conference, held every two years in Oxford, UK.



*THE INSTITUTE HAS FOSTERED
COLLABORATIONS BRIDGING
SCIENCE, ENGINEERING, PHILOSOPHY,
LAW, AND PUBLIC POLICY*

SCIENCE ETHICS

The Berman Institute of Bioethics has made foundational contributions to science ethics, shaping how scientific research is conducted, governed, and translated into policy. Its work spans responsible conduct of research, ethical oversight of emerging technologies, data stewardship, integrity in scientific communication, and—more recently—leadership in the rapidly evolving field of artificial intelligence ethics. Through scholarship, policy engagement, and interdisciplinary partnerships, the Institute has helped define modern expectations for ethical science in a global and technologically complex world.

30 YEARS OF ACHIEVEMENT

The Institute has fostered collaborations bridging science, engineering, philosophy, law, and public policy. These partnerships have led to influential

insights on regulatory frameworks, stakeholder engagement, the governance of emerging biotechnologies, and the ethical design of scientific tools and institutions.

The Berman Institute collaborates scientists at the University and globally to address growing ethical challenges raised by fields such as stem cell science, neuroscience, and genomics. The Berman Institute has been instrumental in convening and helping to draft positions of the Hinxtion Group, an international consortium on stem cells, ethics and law that has published highly visible statements on stem cell science and ethics since 2006. In 2015, they also published an important statement on ethics and CRISPR (genome-editing) technology. The Berman Institute has longstanding expertise in genetics and ethics, with multiple projects on varied issues posed by new genetic technologies.

Berman Institute faculty have led committees at Johns Hopkins, for the state of Maryland, and for the International Society for Stem Cell Research on ethics and stem cell science. They have also chaired and served on committees for the US National Academies on ethics and techniques for preventing maternal transmission of mitochondrial DNA diseases, on gene editing, and other topics in ethics and genetic science. Its faculty have served on national advisory committees and expert panels that guide science policy, technology assessment, and risk governance.

The Institute was home to BRIDGES (Bridging Infectious Disease, Genomics, and Society), a Center of Excellence for Ethical, Legal, and Social Implications (ELSI) research supported by the National Human Genome Research Institute. BRIDGES was designed to examine the ethical, legal, social, historical, and policy issues confronting the incorporation of genomics in the prevention, outbreak control, and treatment of a range of infectious diseases. Prior to the COVID-19 pandemic, Phase I of BRIDGES explored ELSI issues that would arise in personalizing approaches to the prevention and treatment of selected infectious diseases using genomic information. Phase 2 was inspired by our rapidly evolving understanding of disease causation. There are a growing number of examples of “genetic diseases” with an infectious component, and of “infectious diseases” with a genetic component. The COVID-19 pandemic has expanded the territory in which to explore the shifting boundaries between infectious disease and genetic disease, and between uses of emerging technologies.

The Center for Ethics, Law, Policy and the Life Science (CELLS) is a new program area at Johns Hopkins hosted at the Berman Institute. The work of CELLS includes issue mapping, policy analysis, and governance recommendations, taking advantage of the Hopkins Bloomberg Center in Washington, DC, and the opportunities it creates for convening groups, hosting meetings, engaging in policy-related work, and connecting with policymakers, the US National Academies, professional societies, non-governmental organizations, and others.

A key area of growing importance is the ethics of artificial intelligence (AI), data science, and algorithmic decision-making. The Institute’s emerging work in AI ethics addresses fairness, transparency, accountability, and the societal impacts of machine learning (ML) systems. Faculty have examined issues such as bias in health-related algorithms, responsible deployment of AI tools in scientific research, governance of large datasets, and the ethical obligations of developers and institutions using AI for discovery or decision support. This work positions the Institute as a leader in shaping norms for AI development that prioritize human rights, equity, and trustworthy innovation.

SCIENCE ETHICS: THE ROAD AHEAD

Through its sustained scholarship, policy leadership, and forward-looking engagement with emerging technologies, the Berman Institute has helped define the ethical foundations of modern scientific practice and will continue to guide the responsible evolution of science in an era of rapid technological change by:

- Create an integrated, world-leading collaborative program for research, education, and translation at the intersection of AI/ML ethics, policy, and governance, that entails:
 - › Hire new faculty;
 - › Establish an interdisciplinary postdoctoral program, modeled on the Institute’s highly successful existing programs, with an annual class of three individuals;
 - › Fund new additional PhD students; and
 - › Launch a certificate program in AI, Ethics, and Governance targeted to MBE students, MS and PhD students in JHU’s Whiting School of Engineering, and also open to graduate degree students across the university.
- Build on a planning grant from the Dana Foundation to develop a research and programmatic focus on neuroscience and society.

HISTORIC HIGHLIGHTS

Berman Institute director Jeffrey Kahn is a leading voice in the global conversation about the ethics of genetic modification, playing a vital role in shaping how scientists, policymakers, and the public think about the promises and perils of gene editing technologies. Kahn's scholarship focuses on the ethical, legal, and social implications of genetics and genomics, particularly as scientific advances move rapidly from the laboratory toward clinical application. He has written extensively on questions of safety, governance, justice, and public trust, emphasizing that decisions about altering human DNA must be guided not only by technical feasibility but also by societal values and long-term consequences.

In 2015, Kahn served as Chair of the Institute of Medicine / National Academy of Medicine's Committee

on Ethical and Social Policy Considerations of Novel Techniques for Prevention of Maternal Transmission of Mitochondrial DNA Diseases. The Committee, which included the Berman Institute's Anna Mastroianni, concluded that clinical investigation of mitochondrial replacement techniques is ethically permissible, provided stringent safety, efficacy, and oversight conditions are met.

Kahn served on the US National Academies committee that issued the landmark 2017 report *Human Genome Editing: Science, Ethics, and Governance*. The report outlined a cautious, principles-based framework for the acceptable uses of gene editing in humans, distinguishing between somatic editing for treating disease and the far more ethically fraught prospect of heritable germline modification. The report became a foundational reference for governments and scientific bodies worldwide.

Kahn was the only bioethics professor appointed to the

International Commission on the Clinical Use of Human Germline Genome Editing, a global panel whose 2018 convening coincided with the controversial revelation of the birth of a pair of gene-edited twins. The commission developed stringent criteria and governance standards for any potential future clinical use of germline editing, underscoring the need for broad societal consensus and robust oversight.

Numerous Berman Institute faculty have played a key role in this area. They were essential to the formation of the Hinxtion Group, an international consortium on stem cells, ethics, and law that first published highly visible statements on stem cell science and ethics in 2006 and on ethics and CRISPR (genome editing) technology in 2015.

The Berman Institute is continuing its leadership in this area with the recent establishment of its Center for Ethics, Law, Policy, and the Life Science (CELLS). Focused on ethics, law, and policy in emerging life sciences, the work of CELLS includes issue mapping, policy analysis, and governance recommendations.



Center for Ethics, Law, Policy and the Life Sciences



THE BERMAN INSTITUTE HAS SHAPED NATIONAL POLICY AND PROFESSIONAL GUIDELINES IN CLINICAL ETHICS

CLINICAL ETHICS

The Berman Institute holds an institutional commitment to clinical ethics, seeking to help shape the standards, practices, and intellectual foundations that guide ethical decision-making in health care. Through scholarship, education, policy engagement, and clinical partnerships, the Institute has advanced approaches that protect patient rights, support clinicians, and enhance the wellbeing of patients and clinicians alike across diverse medical settings.

30 YEARS OF ACHIEVEMENT

The Institute has produced influential scholarship that clarifies core concepts in clinical ethics, including patient autonomy, informed decision-making, surrogate decision-making, confidentiality, moral distress, and the obligations of clinicians in complex or high-stakes situations. Its faculty have contributed to the development of widely used frameworks for resolving bedside ethical dilemmas, helping clinicians navigate conflicts between patient preferences, medical judgment, institutional constraints, and family dynamics.

Improved education and training for current and future health care providers is a defining achievement. The Institute has developed the pioneering Ethics in Clinical Practice program that reaches residents in eight departments at the Johns Hopkins University School of Medicine, and provides additional clinical ethics education for practicing clinicians, nurses, social workers, chaplains, and ethics committee members. Its workshops, fellowship

programs, and graduate-level courses have helped build a more skilled and ethically reflective clinical workforce. Mentorship from Berman faculty has contributed to the development of the next generation of clinical ethicists who now lead programs nationally and internationally.

Developing and strengthening clinical ethics consultation services represent another major area of impact. At Johns Hopkins medical institutions and beyond, the Institute's faculty have served as leaders in refining best practices for ethics consultations, including standards for training, documentation, evaluation, and interdisciplinary collaboration. Their work has improved the quality and consistency of ethics support provided in hospitals and long-term care settings, helping institutions better serve patients and families facing difficult medical decisions.

The Berman Institute has also shaped national policy and professional guidelines in clinical ethics. Members have contributed to committees and task forces within leading organizations such as the US National Academies, the American Medical Association's Council on Ethical and Judicial Affairs, the Academy for Professionalism in Healthcare, and other specialty medical societies. Their insights have helped inform ethical standards around end-of-life care, informed consent for innovative treatments, resource allocation, and patient-clinician communication.

PUBLIC BIOETHICS: THE ROAD AHEAD

Through sustained media presence and groundbreaking innovation in public communication, the Berman Institute has helped ensure that its bioethics research and scholarship is not confined to academic journals, but actively shapes public understanding and democratic discourse. To make the Berman Institute and Johns Hopkins the world leader in the communication and dissemination of our ethics research, scholarship, and commentary to the public, over the next five years the Institute plans to:

- Continue to explore the capacity of new technologies and immersive storytelling to help rethink methodologies in bioethics communication, including classroom instruction, influencing policymakers, communicating to patients, and delivering findings to broad audiences;
- Implement the latest technologies in building out the iDeas Lab's dedicated physical space;
- Build out the iDeas Lab's funding sources so it becomes financially self-sustaining and continues to exist beyond the funding period of its founding donation;
- Supplement the strength of the iDeas Lab's in-house team in audio and narrative storytelling by recruiting visual designers with capabilities in front-end web design and graphic design, and augment staff by collaborating with flexible project-based contractors and consultants with unique expertise; and
- Present work and methodologies to academic audiences, conveying the value of incorporating storytelling and audiovisuals into standard scholarship.

HISTORIC HIGHLIGHT: BRINGING BIOETHICS ISSUES TO THE PUBLIC

The Berman Institute's long-standing commitment to helping the public understand and navigate the moral dimensions of emerging scientific and health advances and challenges extends to the late 1990s with the creation of the Robert H. Levi Leadership Symposium in Bioethics and Health Policy. Designed to engage both expert and lay audiences, the Levi Leadership Symposium serves as a platform for informed public discussion about pressing bioethical issues, from health care sustainability to tech-

nology policy and beyond.

This biannual public event brings together scholars, practitioners, policymakers, and community leaders to examine complex moral questions at the intersection of health care, research, and society. Each convening features interdisciplinary panels, keynote talks, and opportunities for audience participation that illuminate not only theoretical perspectives but also policy implications and lived concerns.

At the same time, the Berman

Institute continues to explore new approaches for sharing bioethics issues with broader audiences. In October 2023, the Institute's Dracopoulos-Bloomberg iDeas Lab launched its first major project, *playing god?*, a globally distributed 10-episode podcast about the complex ethical questions that arise with groundbreaking medical innovations. Created in conjunction with Pushkin Industries and made possible by generous support from the Greenwall Foundation, the podcast has attracted more than 220,000 listeners and was recognized by the Signal Awards, a national competition judged by a collective of leaders in the field, with a gold medal for Best Science Program, and a gold and silver medal for Best Individual Episode. The series was also selected as Apple's Editorial Pick of the Week and Amazon's Science Editors' pick.



THE INSTITUTE CONTINUES TO SHAPE THE FUTURE OF BIOETHICS BY PREPARING THE FIELD'S NEXT GENERATION OF LEADERS

EDUCATIONAL OFFERINGS

The Berman Institute's educational programs have played a vital role in establishing bioethics as a professional and scholarly field and continue to help shape its future by preparing the next generation of bioethics leaders. Through rigorous degree programs, postdoctoral fellowships, and interdisciplinary training initiatives, the Institute has educated generations of scholars, clinicians, policymakers, and leaders who now influence health care, research, law, and public policy worldwide. Its programs are widely regarded for combining theoretical depth with real-world relevance, embedding ethics into the practice of medicine, public health, science, and policy.

30 YEARS OF ACHIEVEMENT

From its earliest years, the Berman Institute recognized that bioethics required formal, sustained training rather than ad hoc exposure.

The Institute's PhD program in bioethics continues to be the only bioethics-focused health policy PhD in the United States. By training scholars to conduct original, high-level research, the program helped establish

bioethics as a rigorous academic field with its own methods, standards, and scholarly expectations. PhD graduates have become faculty members and leaders of programs at major universities, research institutes, and medical centers, contributing foundational scholarship in a broad range of bioethics areas.

Postdoctoral fellowship programs have been another defining strength, with the Berman Institute establishing itself as the global leader in postdoctoral training as the home of the Greenwall Postdoctoral Fellowship in Bioethics & Health Policy from 1995-2012. In 2013, generous support created the Hecht-Levi Postdoctoral Fellowship in Bioethics, enabling the Institute to continue launching the careers of the next generation of bioethicists, and to provide opportunities for both interdisciplinary collaboration and self-directed scholarship under the guidance of mentors.

The creation of the Master of Bioethics (MBE) program in 2015 enabled the Institute to dramatically expand its educational outreach. The MBE program brings together students from medicine, nursing,

public health, law, philosophy, social sciences, and policy, and emphasizes interdisciplinary dialogue grounded in clinical, research, and public health realities.

A distinctive feature of the Institute's educational approach is its integration with real-world ethics practice. Students and fellows engage directly with ethics consultation services, policy projects, empirical research, and public engagement, ensuring that ethical analysis remains grounded in lived experience. The Institute has also been a national leader in developing curricula in professionalism and ethics for clinical trainees, influencing medical education well beyond Johns Hopkins.

Equally important, the Institute's educational programs have fostered an inclusive intellectual community. By welcoming trainees from diverse disciplinary, cultural, and national backgrounds, it has enriched ethical discourse and supported the global growth of bioethics.

EDUCATIONAL OFFERINGS: THE ROAD AHEAD

Together our educational programs form a cornerstone of the Berman Institute's legacy, shaping the ways that bioethics is taught, practiced, and advanced around the world. To sustain our leadership in preparing the next generation of leaders in the field, the Berman Institute plans to:

- Secure and maintain adequate funding for PhD students;
- Evaluate need and alternative mechanisms for increasing pool of available PhD faculty advisors;
- Ensure a reliable cadre of Hecht-Levi postdoctoral fellowship candidates with clinical backgrounds;
- Recruit additional Institute faculty to educational programs who have expertise in clinical ethics and the social sciences;
- Ensure the sustainability of other postdoctoral programs and encourage Institute faculty who are submitting new grants to include postdoctoral fellows as key personnel;
- Increase MBE scholarship offerings up to and including full-tuition scholarships for some students;
- Launch a sustainable clinical ethics teaching model in the MBE Program;
- Evaluate the ideal size for each new annual cohort of MBE students and the potential need for a new hire to support them;
- Expand and broaden the MBE curriculum to focus on underrepresented areas of bioethics; and
- Evaluate the potential for expanded online programs and offerings.

SUSTAINING EXCELLENCE IN BIOETHICS THROUGH ENDOWED FACULTY POSITIONS

The Berman Institute is fortunate to have seven faculty holding endowed professorships, as well as an endowed directorship. Endowed professorships help attract and retain outstanding scholars, publicly endorsing and honoring the achievements of faculty and advancing the Institute's expertise in particular areas of research.

Philip Franklin Wagley Chair in Biomedical Ethics

CURRENT HOLDER: Ruth R. Faden, PhD, MPH

Established in 1995 by the Johns Hopkins Medical Institutions, Harvey M. Meyerhoff, and family and friends in honor of Dr. Philip Franklin Wagley

Phoebe R. Berman Professorship of Bioethics and Public Health

CURRENT HOLDER: Nancy Kass, ScD

Established in 1996 by Phoebe Rhea Berman

Robert Henry Levi and Ryda Hecht Levi Professorship in Bioethics and Public Policy

CURRENT HOLDER: Jeffrey P. Kahn, PhD, MPH

Established in 2000 by the Levi family in memory of Robert H. Levi and in honor of Ryda H. Levi

Harvey M. Meyerhoff Professorship in Bioethics

CURRENT HOLDER: Jeremy Sugarman, MD, MPH, MA

Established in 2004 with a commitment made in 1999 by Harvey M. Meyerhoff

HISTORIC HIGHLIGHT: PREPARING THE NEXT GENERATION OF LEADERS IN BIOETHICS

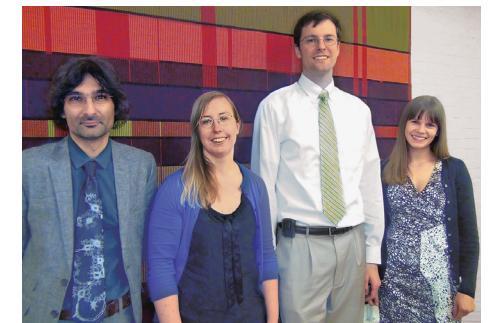
In 1994, when the Greenwall Foundation first solicited institutions to create a postdoctoral fellowship program in bioethics, the Berman Institute partnered with Georgetown University's Kennedy Institute of Ethics to submit the winning proposal. In doing so, they helped establish the interdisciplinary approach to bioethics education that has defined the Berman Institute and the broader field.

"Our premise with the Greenwall Fellows programs was to find talented early scholars who were fully formed in a variety of fields—as lawyers, physicians, scientists, social scientists, or something else—then give them mentorship that was disciplinary-appropriate but also interdisciplinary, and turn them into first-rate bioethicists," said Berman Institute founder Ruth Faden.

The program was so successful that the Greenwall Foundation

extended its initial five-year commitment three more times. But after 20 years and with the program set to expire, National Advisory Board Chair Alex Levi and his family's Hecht-Levi Foundation stepped forward to make a commitment that enabled the ongoing training of postdoctoral fellows, now named the Hecht-Levi Postdoctoral Fellowship Program.

Soon after the Institute's formal establishment in 1995, it began offering a PhD program in Bioethics and Health Policy in collaboration with the Bloomberg School of Public Health's Department of Health Policy and Management. It is taught by faculty experts who provide unparalleled training and mentoring to top students in the field of bioethics as they conduct innovative original scholarship focused specifically on bioethics, public health ethics, and health policy.



THE INAUGURAL COHORT OF HECHT-LEVI FELLOWS INCLUDED (L-R) YASHAR SAGHAI, BRIDGET PRATT, KEVIN RIGGS AND STEPHANIE MORAIN.

The Institute's newest degree offering, the MBE program, was established in 2017 to provide an innovative, interdisciplinary curriculum that combines approaches from philosophy, science, technology, arts and other humanities, public health, medicine, public policy, and law. It prepares students from diverse personal and professional backgrounds to address the bioethics challenges they will face in professional and civic life.

Anne and George L. Bunting Professorship in Clinical Ethics

CURRENT HOLDER: Cynda Hylton Rushton, PhD, RN

Established in 2012 by the Bunting family

Andreas C. Dracopoulos Directorship

CURRENT HOLDER: Jeffrey P. Kahn, PhD, MPH

Established in 2014 by Andreas C. Dracopoulos

Bloomberg Distinguished Professorship of Philosophy and Bioethics

CURRENT HOLDER: Hanna Pickard, DPhil

Established in 2019 by Michael R. Bloomberg

Dracopoulos Rising Professorship in Bioethics

CURRENT HOLDER: Stephanie Morain, PhD, MPH

Established in 2024 by Andreas C. Dracopoulos

A search is currently underway to identify the inaugural holder of the Ruth R. Faden Professorship of Education in Bioethics. Expected to be filled for the 2026-27 academic year, this endowed professorship has been established through the generosity of the Institute's Advisory Board Chair Alexander Levi and his wife, Vicki Gold Levi.



JOSEPH A. CARRESE, MD, MPH, FACP

CELEBRATING THE CAREERS OF TWO BERMAN INSTITUTE FOUNDING FACULTY

The 2024-25 academic year saw the retirement of two of the Berman Institute’s founding faculty, Joseph A. Carrese, MD, MPH, FACP, and Gail Geller, ScD, MHS.

“Even before there was a Berman Institute, Joe and Gail were instrumental in establishing the foundation of what has become a world-leading bioethics program,” said Berman Institute Director Jeffrey Kahn. “Their impact has gone far beyond our institution and university, helping shape the field, improving the quality of clinical training and patient care, and preparing the next generation of leaders in medicine and bioethics.”



GAIL GELLER, SCD, MHS

JOSEPH A. CARRESE, MD, MPH, FACP

Joe Carrese’s scholarly work has centered on clinical ethics and professionalism, with a strong emphasis on medical education, especially how physicians can integrate ethical reasoning, cultural sensitivity, and professionalism throughout their training and practice. He explores ethical challenges that arise in everyday medical care: informed consent, patient refusal of treatment, truth disclosure, resource use and allocation, fairness, and culturally sensitive care.

As a physician-scholar, Carrese sees ethics not as an abstract specialty, but as the core of everyday clinical practice. Through his teaching, his institutional leadership, and his writing, he has helped ensure that professionalism, respect for patients, cultural sensitivity, resource awareness, and moral reasoning are integral to medicine.

His significant contributions include building clinical ethics education infrastructure at Johns Hopkins.

GAIL GELLER, SCD, MHS

Through decades of teaching, research, writing, and advisory work, Gail Geller has demonstrated how bioethics can and should intersect with medicine, public health, genomics, and education. Her career exemplifies the role of an empirical ethicist, grounding social science and normative questions in real-world contexts, data, and lived human experience.

Her influence extends beyond individual publications: she has helped reshape medical school curricula, informed policies, nurtured ethical reflection in countless professionals, and anticipated emerging challenges at the intersection of genomics, infectious disease, chronic illness, and care. In doing so, she has significantly contributed to making healthcare more humane, equitable, and ethically attentive.

As Director of Education Initiatives in the Berman Institute, Geller directly cultivated the next generation of bioethics scholars and leaders, overseeing the Berman Institute’s master’s and doctoral degree programs, as

well as its postdoctoral training programs. In medical education, she has played a major role in shaping the “culture of medicine” curriculum at Johns Hopkins School of Medicine: she co-directed the core theme addressing ethics, professionalism, social justice, and humanism; led the scholarly concentration in Humanism, Ethics, and the ‘Art’ of Medicine; taught electives in medical humanities and social medicine; and contributed to curriculum reform.

Under his leadership, the Program on Ethics in Clinical Practice embedded clinical ethics into the training program for residents across eight departments at Johns Hopkins Hospital, and continues to support ongoing empirical and educational work on ethics in outpatient and inpatient settings.

For almost 20 years, he chaired the Ethics Committee at Bayview Medical Center, overseeing consultation services that support clinicians navigating difficult clinical-ethical decisions. As chair of one of Johns Hopkins’ Internal Review Boards (IRB), he helped guide human subject research review, ensuring ethical oversight of clinical research.

“Joe Carrese has had an incredible impact on human research protections at Johns Hopkins,” said Megan Kasimatis Singleton, JD, MBE, CIP, Associate Dean for Human Research Protection and Director of the Human Research Protection Program at Johns

well as its postdoctoral training programs. In medical education, she has played a major role in shaping the “culture of medicine” curriculum at Johns Hopkins School of Medicine: she co-directed the core theme addressing ethics, professionalism, social justice, and humanism; led the scholarly concentration in Humanism, Ethics, and the ‘Art’ of Medicine; taught electives in medical humanities and social medicine; and contributed to curriculum reform.

“I had the great pleasure of working with Gail in efforts to advance the education of medical students in ethics and in research methods,” said Eric Bass, Director of the School of Medicine’s course on Foundations of Public Health, and Co-Director of its Scholarly Concentration in Public Health Research.

“Gail demonstrated an unwavering commitment to student education even when the curriculum seemed to give low priority to education in ethics. She also made great contributions to the Scholarly Concentrations

Hopkins University School of Medicine.

“In the past two decades of leadership roles on IRB 5, Joe has helped support countless researchers and research teams in navigating the IRB review process. Many research teams and research participants have benefitted from Joe’s attention to detail and strong commitment to the core ethical principles that guide human research protections.”

Carrese served on the Board of Directors of the American Society for Bioethics and Humanities, was a founding Board member of the Academy for Professionalism in Healthcare, and later served as its Chair. In recognition of his work in medical ethics education, he received a National Award for Scholarship in Medical Education at the annual meeting of Society of General Internal Medicine in 2008. In 2018 he was elected a Fellow of The Hastings Center.

course since its inception by giving many students an opportunity to explore unique projects in the humanities and learn how to apply qualitative research methods to vexing ethical issues and important clinical problems.”

Geller served on the Board of Directors of the American Society for Bioethics and Humanities, the scientific review panel for the Ethical, Legal and Social Issues Program at NIH’s National Human Genome Research Institute, and the National Academy of Medicine Committee on the Review of Omics-Based Tests for Predicting Patient Outcomes in Clinical Trials. She was a Consultant to the Ethics Working Group of the NIH National Children’s Study, the Informed Consent Working Group of the DHHS Secretary’s Advisory Committee on Genetic Testing, the CDC’s Program in Public Health Genetics, and the Presidential Advisory Committee on Human Radiation Experiments. In 2011 she was elected a Fellow of The Hastings Center.

RUTH FADEN RECEIVES GREENWALL FOUNDATION'S BERNARD LO, MD, AWARD FOR EXCELLENCE IN BIOETHICS MENTORSHIP

Ruth Faden, PhD, MPH, was named the recipient of the Greenwall Foundation's 2025 Bernard Lo, MD Award in Bioethics. The award, recognizing Faden for excellence in bioethics mentorship, conveys a cash prize of \$25,000.



"Professor Faden's mentorship is exceptional for its breadth and reach across backgrounds and disciplines," said Michelle Groman, JD, President & CEO of The Greenwall Foundation. "She has dedicated her career to lifting up the next generation of bioethics professionals, who continue to pay it forward as outstanding mentors themselves. It's not surprising; they have certainly learned from one of the best."

The Greenwall Foundation established the Lo Award to honor Dr. Lo's service to The Greenwall Foundation as its President & CEO from 2012 to 2020 and founding Director of the Foundation's flagship Faculty Scholars Program. The Lo Award is given annually and recognizes a different area of accomplishment in bioethics each year.

Faden is the founder of the Johns Hopkins Berman Institute of Bioethics and was its director from 1995 until 2016. She was the inaugural Andreas C. Dracopoulos Director (2014-2016) and has since 1995 been the inaugural Philip Franklin Wagley Professor of Biomedical Ethics.

"It is particularly appropriate that this year's award honors Ruth for excellence in bioethics mentorship," said Jeffrey Kahn, Director of the Berman Institute. "Generations of Berman Institute faculty, trainees, and students have benefited from Ruth's generosity as a mentor, as have countless colleagues across the field."

In recognition of Faden's leadership in preparing the next generation of bioethics scholars, Alex Levi, chair of the Berman Institute's national advisory board, his wife Vicki, and other generous donors, established the Ruth R. Faden Fund for Education in Bioethics in 2018. The Faden Fund provides tuition support for students in the Master of Bioethics program, offers research and conference travel resources for PhD students, has helped create the newly established endowed Faden Professorship of Education in Bioethics, and supports leadership and training for a select group of highly qualified fellows and graduate students through the Faden Scholars Program.

PULSE OXIMETERS STILL NOT TESTED BY MANUFACTURERS ON DIVERSE GROUPS



Manufacturers have been slow to follow Food and Drug Administration (FDA) guidance that recommends testing pulse oximeters on participants with a range of skin pigmentations, according to a study led by the Berman Institute's Kadija Ferryman, PhD, and other researchers at the Johns Hopkins Bloomberg School of Public Health.

The FDA made the recommendation in 2013, following reports that pulse oximeters—devices that measure blood-oxygen levels by shining light through the skin—can be less accurate when used on people with dark skin and that undetected low oxygen levels are more common in non-white patients. This puts patients with darker skin at risk for missed symptoms and potential misdiagnoses.

In the new study, funded by a Nexus Research Award from the University, Ferryman analyzed publicly available FDA clearance summaries from manufacturers of FDA-regulated pulse oximeters before and after the FDA's guidance. They found that only a quarter of the summaries since 2016 included language suggesting compliance, up from just 4% before the guidance was issued.

The FDA "clears" medical devices that are sufficiently similar to devices that have already been approved by the FDA. Pulse oximeters intended for use in medical decision making or monitoring, whether at home or in a clinical setting, go through this FDA pathway. They



became even more widely used during the COVID-19 pandemic, as many people bought them for home use.

The findings were described in a peer-reviewed research letter published online earlier this year in *JAMA*. One week later the FDA announced updated draft guidance for manufacturers on pulse oximeters. The FDA's new draft guidance includes recommendations for manufacturers to include larger numbers of participants with a range of skin tones in their testing.

"Our findings underscore the limits of voluntary guidance alone for solving bias in pulse oximeters," said Ferryman. "The FDA's new draft guidance is a step in the right direction, but others, including manufacturers, health care organizations, and other organizations committed to patient safety can contribute to addressing this bias."

In their new analysis, Ferryman and colleagues observed that manufacturers broadly lacked a standardized framework for assessing skin tone variation, often describing test subjects' skin simply as "dark" or "light," or making reference only to their ethnic or racial backgrounds.



CONTINUING TO BUILD BIOETHICS CAPACITY IN GREECE

The Berman Institute continues to make major strides toward developing bioethics capacity in Greece through its establishment of the Stavros Niarchos Foundation Bioethics Academy (SNFBA).

In April 2025, SNFBA offered its 5th annual intensive bioethics course in Athens. The Academy

continues to attract many more applicants that it can accommodate, leading to the need to offer and additional foundations course annually. One hundred students and professionals working in Greek institutions enrolled, including medical students, practicing physicians, individuals overseeing

and performing clinical research, working in health and science policy, and performing biomedical research ethics reviews.

New this year was a two-day course focused on "Ethics in Neuroscience," featuring lectures and small group discussions facilitated by leading faculty experts

from the Berman Institute, ETH Zurich, and Greek universities.

In March 2025, SNFBA held an Alumni Mini-Conference at the Hopkins Bloomberg Center in Washington, DC. Ten alumni of the program, including lawyers, university professors, postdoctoral research fellows, and medical

students presented their ongoing bioethics research projects, while fostering professional connections and helping strengthen bioethics infrastructure in Greece.

ANNUAL LEVI SYMPOSIUM UNITES COMMUNITY MEMBERS WITH SCHOLARS TO ADDRESS HEALTH CARE'S IMPACT ON THE ENVIRONMENT

Roughly 80% of health care's oversized carbon footprint derives from the production, transportation, use, and disposal of a single-use medical supply chain. Yet as health care organizations try to practice "resource stewardship"—that is, to move away from single-use disposable items toward sustainable use of durable items—they encounter widespread perceptions that disposability is a necessary virtue in modern health care. Caregivers, patients, and health system managers fear that any move from disposability to sustainability must lead to trade-offs in safety (from infectious threats), efficacy (in pharmaceutical delivery),



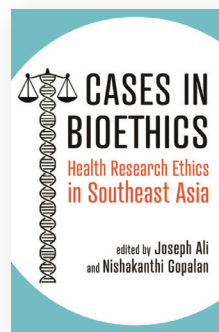
or efficiency (in cost-effectiveness). On November 12, 2024, the Berman Institute's 2024 Robert H. Levi Symposium, "The Value(s) of Disability in Health Care: Questioning the Tradeoffs of Safety, Efficacy, Efficiency, and Sustainability," questioned these perceived trade-offs, working to disentangle legitimate evidential and moral reasoning from the inertia of convenience. Scholars and practitioners in bioethics, clinical practice, environmental justice, practice innovation, and health policy came together with panel representatives from the South Baltimore Community Land Trust to explore policy pathways that harmonize clinical safety, efficacy, and efficiency with sustainability.

"Due in large part to Johns Hopkins Healthcare, the incinerator in Baltimore's Curtis Bay neighborhood is the nation's largest medical waste incinerator," said the Berman Institute's Maria Merritt, PhD, who co-organized the symposium with Jeremy Greene, MD, PhD. "It was vitally important that the symposium included the voices of community residents impacted by those pollutants."

"This casebook vividly illustrates the ethical issues prevalent in regional health research, including those faced by researchers, participants, institutions, and policymakers," said Ali. Cases cover topics including:

- Protecting the rights of clinical staff;
- Scaling up HIV self-testing;
- Accessing novel cancer therapies;
- Conducting vaccine trials with adolescents; and
- Designing health apps ethically, and many others.

JOE ALI CO-EDITS NEW CASEBOOK ADDRESSING HEALTH RESEARCH ETHICS IN SOUTHEAST ASIA



The Berman Institute's Joseph Ali, JD, and co-editor Nishakanthi Gopalan (Universiti Malaya) have collaboratively created *Cases in Bioethics: Health Research Ethics in Southeast Asia*, a groundbreaking resource on health research ethics in Southeast Asia, freely available from Johns Hopkins University Press's Project Muse.

With contributions by researchers and ethicists from the region, this case compilation describes global cooperation and a commitment to addressing real-world ethical challenges in health research, particularly in low- and middle-income countries.

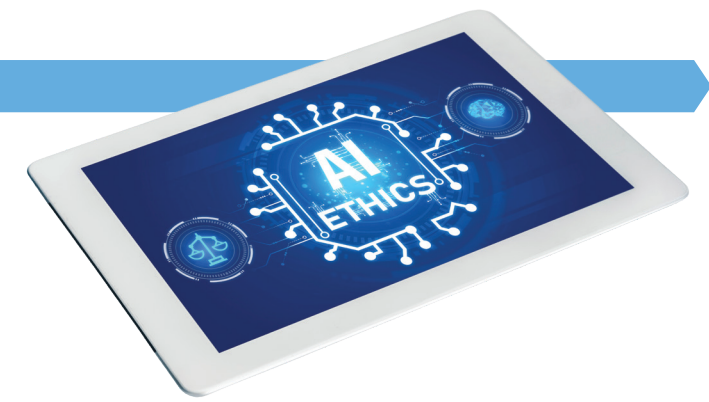
The Berman Institute's Jeremy Sugarman also participated in the creation of the casebook, which arose as part of the Institute's collaboration with the Universiti Malaya to establish a Master of Research Ethics degree program that is the first of its kind in Malaysia.

NAVIGATING THE AI LANDSCAPE: UNIVERSITIES UNITE FOR ETHICAL INNOVATION

The Berman Institute and the Johns Hopkins Institute for Assured Autonomy (IAA) welcomed colleagues from academic institutions across the country for the Ethical & Responsible AI University Collaborative meeting held on February 19, 2025, at the Hopkins Bloomberg Center in Washington, DC.

More than 20 faculty and staff members whose research and work are at the intersection of artificial intelligence (AI) and ethics gathered for panels and discussions about how academic institutions can guide AI development.

In addition to attending this annual in-person event, members of the collaborative also work together throughout the year to discuss challenges and successes. They are navigating these discussions against a backdrop of increasing adoption of AI and loosening regulations, says Debra Mathews, PhD,



Associate Director for Research and Programs at the Berman Institute, IAA's ethics and governance lead, and Professor of Genetic Medicine at the Johns Hopkins School of Medicine.

"In the absence of federal guardrails, academics, institutions, and professional societies must step up to help maximize the benefits and minimize the harms of this transformational technology within our spheres of influence," she said. "Our consortium is an important venue not only for information sharing but also collective action, to help ensure that as new AI-enabled technologies are developed and deployed, they protect and advance, rather than frustrate the needs and interests of the public".

BERMAN TRIO, LED BY PHD STUDENT CALEIGH PROPES, PUBLISH ARTICLE IN JAMA

Under the guidance of the Berman Institute's Stephanie Morain, PhD, the Dracopoulos Rising Professor in



Bioethics, PhD student Caleigh Propes and Hecht-Levi Fellow Kayla Mehl, PhD, published a commentary, "Untapped Potential? Representativeness in Pragmatic Clinical Trials," in *JAMA*.

The trio explored the potential of pragmatic trials to improve demographic representativeness and health equity in clinical research, reviewing early experiences with pragmatic trials and describing the challenges researchers face in achieving representative enrollment. Among their findings were the following:

- Pragmatic trials are embedded in unjust health care systems;
- Pragmatic trials often rely on electronic health record systems, which may inaccurately capture data for ethnicity and social determinants of health;

- As in traditional clinical trials, site selection in pragmatic trials tends to be biased toward better-resourced sites and sites with closer ties to established researchers; and
- There is a general lack of attention to health equity considerations in trial design.

The authors concluded that "further empirical scholarship is needed to assess the extent to which [pragmatic trials] are (or are not) truly representative and to define appropriate enrollment goals."

Known for its rigorous peer-review process and broad circulation, *JAMA* is considered one of the world's leading and most influential general medical journals. Propes' status as lead author in a *JAMA* article is rare for a PhD student, and underscores the Berman Institute's commitment to helping prepare the next generation of leaders in bioethics.

BERMAN INSTITUTE FACULTY SELECTED FOR JHU NEXUS, DISCOVERY AWARDS TO PURSUE INTERDISCIPLINARY PROJECTS



Multiple projects involving faculty at the Berman Institute are among those selected to receive funding from the University's Nexus Awards Program over the next year. The 38 convening, research, and teaching endeavors will

be based at the Johns Hopkins University Bloomberg Center in Washington, DC.

The projects span every academic division of the university and include nearly 150 scholars exploring a range of topics, including bird flu preparedness, improving primary care, AI-enhanced health care, and global humanitarian food assistance.

The selected projects involving Berman Institute faculty are:

- Johns Hopkins H5N1 Influenza Preparedness and Response Forum (with Anne Barnhill, PhD);
- Responsible AI for Health Symposium at Historically Black Colleges (with Kadija Ferryman, PhD);

- Closing the Global Health Research-to-Access Gap (with Nancy Kass, ScD); and
- AI as a Participant in Democratic Deliberation: Exploring the Future of Convenings (with Graham Sack, PhD).

Multiple Berman Institute faculty were also selected for University Discovery Awards, which support project teams from at least two JHU schools or affiliates who aim to solve a complex problem and expand the horizons of knowledge. Altogether, the winning project teams—chosen from 274 proposals—included 150 individuals representing 12 Johns Hopkins units.

The projects involving Berman Institute faculty are:

- Counteracting Obscured Racialized Risks by Examining Corporate Tactics in the Pulse Oximetry Market (with Kadija Ferryman, PhD);
- *Fidelio* and Unjust Incarceration (with Carolyn Sufrin, MD, PhD);
- Storytelling for Climate Change: Using Transportative Narratives to Overcome Climate Change Skepticism & Reduce Opinion Polarization (with Graham Sack, PhD).

NANCY KASS NAMED INTERIM CHAIR OF THE DEPT. OF HEALTH POLICY AND MANAGEMENT IN THE BLOOMBERG SCHOOL OF PUBLIC HEALTH



Nancy Kass, ScD, the Phoebe R. Berman Professor of Bioethics and Public Health and the Berman Institute's Deputy Director for Public Health, was appointed the Interim Chair of the Dept. of Health Policy and Management in the Bloomberg School of Public Health (BSPH) in July. Kass received her ScD from the Bloomberg School and joined its faculty in 1992, and three years later became a founding member of the Berman Institute's faculty.

Kass is an internationally recognized scholar who conducts empirical work in bioethics and health policy. Her publications are primarily in the field of US and international research ethics, HIV/AIDS ethics policy, public health ethics (including in obesity prevention and public health preparedness), and ethics and learning health care systems. She recently completed a term as Vice-Provost for Graduate and Professional Education for Johns Hopkins University, and now chairs the second-largest department in BSPH with more than 100 faculty members.

GRANTS SECURED BY BERMAN INSTITUTE FACULTY FROM 9/01/2024 – 8/31/2025

Joseph Ali, JD
Fairness in International Clinical Trial Partnerships
 World Health Organization
 Johns Hopkins University-Addis Ababa University Research Ethics Training Program in Ethiopia (JHU-AAU RETP)
 US National Institutes of Health
Fogarty African Bioethics Post-Doctoral Training Program
 US National Institutes of Health
Makerere University International Bioethics Research Training Program
 Makerere University/US National Institutes of Health
Pain Management Collaboratory Coordinating Center Grant
 US National Institutes of Health
Data for Health Initiative
 Bloomberg Philanthropies

Anne Barnhill, PhD
Enabling Ethical Analysis and Public Justification in State-Level Pandemic Responses in the United States
 US National Science Foundation

Mary Catherine Beach, MD
Reducing Bias and Fostering Respect for Patients as Persons
 Greenwall Foundation

Juli Bollinger, MS
Comparing Direct and Indirect Methods for Cascade Screening
 NIH

Lomax Boyd, PhD
Brainy BUGSS: Developing Experiential Curricula on NeuroAI at a Community Biolab
 Dana Foundation

Bringing Reward to Embodied Organoid Intelligence
 US National Science Foundation
Public's Epistemic and Moral Attitudes Toward Organoid Intelligence
 Center for Alternatives to Animal Testing

Survey of Unmet Desire Among Early Career Researchers to Engage with Neuroscience and Society
 Dana Foundation
Justice in Basic Research Agendas (JuBRA): An Equity-Centered Protocol for Assessing Basic Research
 Kavli Foundation

Kadija Ferryman, PhD
Data and Society
 Data and Society Research Institute

Lauren Arora Hutchinson, PhD
International Bioethics Oral History
 Wellcome Trust

Jeffrey Kahn, PhD, MPH
Oxford-Johns Hopkins Global Infectious Disease Ethics Collaborative (GLIDE)
 Wellcome Trust
Stavros Niarchos Foundation Bioethics Academy
 Stavros Niarchos Foundation
Reviewing the 14-Day Rule for Research on Human Embryos
 Wellcome Trust

Nancy Kass, ScD
Fogarty African Bioethics Post-Doctoral Training Program
 US National Institutes of Health

Debra Mathews, PhD, MA
Guiding Principles for Human Data Sharing and Use: Balancing Public and Scientific Values
 Greenwall Foundation

Enhancing Diversity Among Future ELSI (Ethical, Legal, and Societal Implications) Researchers
 NIH

Stephanie Morain, PhD, MPH
Institutional Obligations for Pragmatic Clinical Trials
 Greenwall Foundation
HEAL (Helping to End Addiction Long-term) Collaboratory Resource Coordinating Center
 US National Institutes of Health

Travis Rieder, PhD
Multilevel Interventions to Reduce Harm and Improve Quality of Life for Patients on Long Term Opioid Therapy
 US National Institute on Drug Abuse

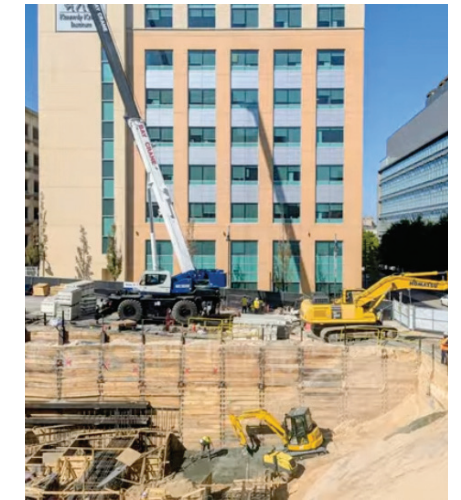
Cynda Rushton, PhD, RN
MERPA Nurse Cohort Training
 Johns Hopkins Hospital

Jeremy Sugarman, MD, MPH, MA
Health Care Systems Research Collaboratory Coordinating Center
 US National Institutes of Health

Immune Tolerance Network
 US National Institutes of Health
Investigating Psychosocial Experiences of HIV Cure Trial Participants Undergoing Extended HIV Treatment Interruptions: Implications for Ethical Conduct
 US National Institutes of Health

Risks, Benefits, and Stakeholder Perspective of Molecular Epidemiology for HIV Prevention
 US National Institutes of Health

Strengthening the Master of Health Research Ethics Training Program
 US National Institutes of Health



PROGRESS CONTINUES ON HENRIETTA LACKS BUILDING

Construction is in full swing on the Henrietta Lacks Building. The new 34,000-square-foot building will adjoin Deering Hall, and support multiple programs of the Berman Institute, Johns Hopkins University and the School of Medicine. The new building will house flexible program and classroom space for educational, research, and community use purposes, with occupancy slated for early 2027.

NEW FILM BRINGS VIEWERS INSIDE HOMES OF FAMILIES WITH CHILDREN WITH MEDICAL COMPLEXITY



For children with medical complexity and their families, the home serves many critical functions: as a site of medical care, therapies, schooling, play, socialization, and family time together.

Johns Hopkins pediatrician and Berman Institute faculty member Rebecca Seltzer, MD, MHS, and the Dracopoulos-Bloomberg iDeas Lab have collaborated to produce a short film, “Feels Like Home’: Lived Experiences of Children with Medical Complexity (CMC) and Their Families,” to immerse viewers in how families with CMC adapt and build their home environments to meet their children’s and family’s needs.

Throughout the past year, the iDeas Lab developed relationships with families across the country, from Ohio to California to Maryland. The film draws entirely from footage sourced from these families, detailing moments from their lives at home, including everyday moments navigating physical space in the house and special celebrations such as birthday parties. The film sought to capture both the challenges of daily life and families’ ingenuity in addressing those challenges.

“Our research shows the challenges children with medical complexity and their families face living in inaccessible homes. So often, people who are making decisions about kids with complex medical needs, whether they be policy makers or pediatricians, never get a glimpse into what life is like at home for them,” said Seltzer.

“This project’s deliverables are both public-facing and family-centered, which we hope will foster feelings of community among similarly situated families and promote a shared sense of humanity with audiences who perhaps were previously unaware.”

A pre-screening and panel discussion attracted a statewide gathering of 150 stakeholders; the panel included the filmmakers and experts in the area of home accessibility, including people with lived experience. Seltzer showed the film during Grand Rounds at Sinai Hospital’s Department

of Pediatrics, and will also share it at a Johns Hopkins Hospital General Pediatrics Division meeting, including a special questions-and-answer session. The filmmakers are preparing a communications plan to reach key audiences, including legislators and policymakers.

In addition to the film, the iDeas Lab has developed a website (<https://www.feelslikehomefilm.org>), in close collaboration with a design technologist interested in adaptive design, to host the film alongside resources including a glossary and guide for planning new screening events. An audio documentary intended for broad public audiences that explores how families with CMC experience their home environment is forthcoming, too.

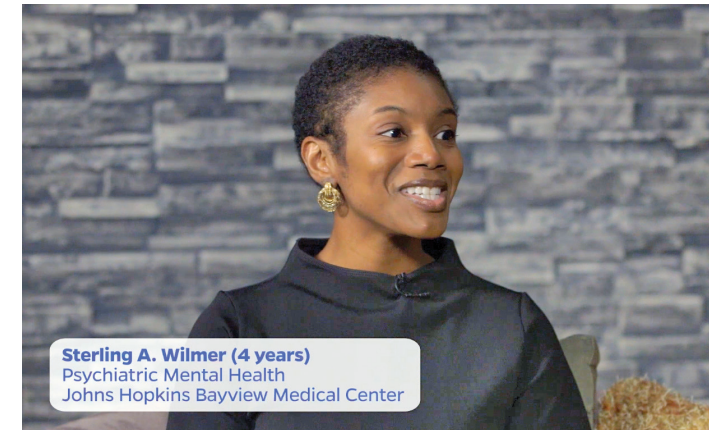
“This project is an example of how the iDeas Lab can work with faculty from the outset of a project to envision and create outputs that will reach and immerse audiences beyond academia, getting them to think deeply and differently about topics,” said iDeas Lab Director Lauren Arora Hutchinson, PhD. “The Lab has a team of creative producers—specialists in audio, video, and digital media who produce podcasts, videos, screenplays, films, and interactive projects—who look forward to creatively engaging with families with lived experiences on this important matter and making sure their unique perspectives are heard and shared.”

HARNESSING THE POWER OF NURSES: A FILM COLLABORATION WITH THE R3 RESILIENT NURSES INITIATIVE OF MARYLAND

The COVID-19 pandemic changed common narratives around what it means to be a nurse, resulting in burnout, moral injury, and depression. In partnership with the Berman Institute’s Cynda Rushton, PhD, and the R3 (Renewal, Resilience, and Retention) Resilient Nurses Initiative, the Dracopoulos-Bloomberg iDeas Lab has developed a short, 15-minute film that promotes a new narrative about nursing. The film seeks to build community and support networks, and invite nurses to rekindle a sense of joy and fulfillment that is an integral part of their irreplaceable work.

“The film features Maryland nurses from diverse levels of experience and settings such as schools, homecare, hospitals, and others, in conversation with one another. We see value in facilitating cross-generational discussions between nurses who may also work in different areas and come from diverse backgrounds,” said Rushton. “Ultimately, we hope this film serves as a catalyst for raising the voices of nurses across Maryland and beyond.”

The film contains conversations that consider the challenges nurses face, paired with an exploration of what they find most fulfilling in their work. Other topics include understanding how nurses sustain their integrity, how they find value in their work, and organizational



mechanisms that are most effective in creating healthy, ethical workplaces.

A discussion guide has been developed in coordination with the film to be used by practicing nurses, students, and faculty to engage in these key issues. Following its premiere at a statewide gathering in April 2025, the film and discussion guide have been distributed by the R3 Resilient Nurses Initiative throughout Maryland networks to inspire and provoke realistic and compelling discussions that offer action-forward, community-based solutions to the nursing crisis.

“Nurses deserve the ability to shape the narrative around their profession by using their own voices,” said iDeas Lab Director Lauren Arora Hutchinson. “Capturing first-person experiences can help write a new story centered around the pride, agency, and importance of nurses.”

MORAL HISTORIES PROJECT CONTINUES TO GROW IN SIZE AND SCOPE

In 2025, the Berman Institute expanded the Moral Histories project, a collection of oral history interviews with the founding generation of bioethics scholars. The first phase comprised 96 hours of audio-recorded oral histories with 15 scholars from the founding generation of the field of bioethics. This year, the oral histories of 18 additional scholars were added to the collection, which now surpasses 200 hours of first-person accounts on the formation of the field of bioethics.

In the coming months, the project will launch a new phase, made possible by a two-year \$300,000 grant from the Wellcome Trust, to expand the



scope of the collection to interview bioethics scholars from outside the United States. This phase of the project will include an interactive website and two audio documentaries based on the Moral Histories collection, produced by the Dracopoulos-Bloomberg iDeas Lab.

BRINGING BIOETHICS INTO CLASSROOMS EVERYWHERE

The Berman Institute partnered with a group of nationally recognized K-12 educators from across the country to bring bioethics into science classes everywhere.

Drawing upon the Institute-produced podcast *playing god?* for its source material, this collaboration, led by Institute faculty Amelia Hood, MA, produced free lesson plans and related educational materials, available online for teachers to introduce their students to complex ethical questions around the development and use of new scientific and medical innovations. Each episode serves as a unique case study that explores bioethics principles and inspires lively discussions.

“As science and medicine advance at an ever-increasing pace, new innovations raise new questions about their ethical use. The Berman Institute is committed to bringing these bioethics discussions beyond the boundaries of academic research,” said Institute Director Jeffrey Kahn.

“We are developing new approaches to sharing bioethics in effective and compelling ways with the general public. That was part of the motivation behind creating the podcast, and the creation and distribution of these educational materials will enable us to engage students in bioethics topics earlier in their education.”

Launched two years ago, the 10-episode first season of *playing god?* shared the deeply personal stories of people caught at the life-and-death crossroads of medical innovations and ethical dilemmas. After garnering almost 250,000 listeners, the podcast’s producers sought to expand its reach by creating educational materials that would enable teachers to use each episode as the source material for a lesson on bioethics.

To develop the materials, the Institute turned to teachers participating in the US Department of Energy’s Albert Einstein Distinguished Educator Fellowship Program, which provides accomplished K-12 science, technology, engineering, and mathematics (STEM) educators the opportunity to work in federal agencies or in US Congressional offices, applying their extensive knowledge and classroom experiences to national education program and/or education policy efforts.

Eight of the fellows, selected from public and private



schools across the country, formed an advisory board that helped shape, review, and pilot the educational materials.

“Students today have tremendous interest in the societal impacts of technological innovation, but it can be challenging to find appropriate, relevant materials to engage and educate them on these topics. This collaboration provides teachers such materials, suitable for a wide range of grades and subjects,” said Samantha Willsey, a science teacher from Indiana and 2023-2024 Einstein Fellow. “As an educator, it has been incredibly rewarding to work with the researchers at the Berman Institute and develop something that will benefit so many students and teachers.”

Each of the podcast’s 10 episodes has a suite of accompanying educational materials, which includes a summary, glossary of terms and bioethics concepts, discussion guide for teachers, suggestions for group and individual activities, supplemental readings, and list of related careers. Each lesson incorporates the stories told in the podcast to prompt students to recognize the societal impact of science and technology, and to deliberate and form solutions to tough ethical challenges.

A second season of *playing god?* will launch in 2026, and the Berman Institute plans to develop educational materials for those episodes as well.

“The insight and knowledge of the teachers on our advisory board has been invaluable,” said Hood, who led the process of drafting the educational materials. “We hope this is just the first of many collaborations with K-12 educators as we strive to share bioethics with as many audiences as possible.”

INCREASING THE IDEAS LAB’S EDUCATIONAL AND SCHOLARLY OUTREACH

To help prepare the next generation of leaders in the field of bioethics, the Dracopoulos-Bloomberg iDeas Lab for the first time offered a course, “Bioethics, New Narratives, and Storytelling,” to students enrolled in the Berman Institute’s Master of Bioethics program.

Students brought creativity into bioethics by learning new ways to tell stories at the heart of science, health, medicine and ethics. iDeas Lab director Lauren Arora Hutchinson is course director, and the course featured guest lectures by a world-class group of experts in new technologies, the uses of narrative structure, editing, sound and personal testimony as students applied the techniques of storytelling to their own bioethics

EXPANDING BIOETHICS STORYTELLING IN LATIN AMERICA BY PROVIDING RESOURCES AND MENTORSHIP

In collaboration with Mediamorfosis, a Latin American New Media festival that highlights the newest developments in virtual, augmented, and mixed reality, the iDeas Lab awarded two projects a grant of \$5,000 each to support their creative work in XR production and storytelling regarding issues of bioethics.

After receiving more than 60 submissions, iDeas Lab Director Lauren Arora Hutchinson and Joseph Ali, Associate Director for Global Programs at the Berman Institute, narrowed the field to six then traveled to Chile to participate in the selection of the two awardees. Arora Hutchinson also delivered a talk, “Bioethics and New Narratives: A Case Study,” at the festival.

“Sponsoring these grants is part of the iDeas Lab’s mission to uplift innovative creators around the world, and broaden the landscape of who tells stories about bioethics,” she said. “We also want to encourage discussion on bioethical issues in the Latin America region and establish a collaborative link between the iDeas Lab and Mediamorfosis”

media projects. Students also critically considered how different techniques impact their stories’ reception by audiences, as well as ways bioethics has been portrayed in popular media.

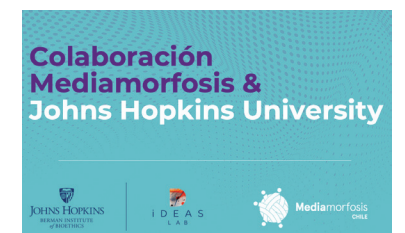
Hutchinson gave a talk at the annual Oxford-Johns Hopkins Global Health and Bioethics Conference (a component of the Wellcome Trust-funded Global Infectious Disease Ethics Collaborative), using the methodological approach of many of the iDeas Lab’s projects to elucidate the importance of personal testimonies in global health research.

Hutchinson also participated as an invited panelist at a New York University symposium, “Podcast Intellectuals: Producing Original Scholarship with Audio,” discussing the relationship between podcasts and universities.

The selected projects are:

- “Tiflo Maze” by Paraguay’s Carlos Cañete, an immersive virtual reality experience that tells the story of a stranger who, upon arriving on an island, comes across a labyrinth and, after losing his eyes, must overcome challenges to assimilate to his new condition: being a blind person.
- “Soul Charger” by Chileans Vicente Manzano and Beltrán Lihn, a multi-user, interactive bio-behavior virtual reality experience designed to guide participants through an artistic stimulation ceremony, tracking physiological states such as heart rate, temperature and movement to visualize participants’ energy fields and bodily interactions in an artistic way.

Both winning projects are receiving mentorship in narrative storytelling and global and digital bioethics towards public presentation of the final product.



PUBLICATIONS SEPTEMBER 2024-AUGUST 2025

Listed alphabetically by primary author with Berman Institute faculty, trainees and students identified in bold and blue.

Abdool Karim S, Alvarado M, Johnson T, **Barnhill A**. Recognizing the ethical complexity of food policies and the role of the food industry. *Health Promotion International*. 2024 Dec 1;39(6):daae168.

Abdool Karim S, Frank T, Khan AS, Tlhako MG, Joni SK, Swart EC. An assessment of compliance with proposed regulations to restrict on-package marketing of packaged foods to improve nutrition in South Africa. *BMC Nutrition*. 2025 Jan 21;1(1):17.

Abdool Karim S, Frank T, Kruger P. A Human-Rights-Based Approach to Front-Of-Package Labelling in South Africa. *Obiter*. 2025 Apr 8;46(1).

Abdool Karim S, Smith MJ, Silva DS, Faure M, Woskie L, Nyirenda D, et al. Coercing for public health: reflections on the role of coercion in public health emergencies. *Monash Bioeth Rev*. 2025 Apr 30.

Abdool Karim S. Justifications and acceptability of coercive public health measures in the COVID-19 response in South Africa: a case study of the jurisprudence of human rights cases. *Monash Bioeth Rev*. 2024 Nov 7.

Abdool Karim S. The content and scope of the right to nutritious food: Can section 27(1)(b) address the growing epidemic of obesity in South Africa? *South African Journal on Human Rights*. 2025 Apr 8;1–28.

Adams L, Fontaine E, Matheny M, Krishnan S, editors, authors include **Ferryman K**. An Artificial Intelligence Code of Conduct for Health and Medicine: Essential Guidance for Aligned Action. *Washington, D.C.: National Academies Press*; 2025.

Alenichev A, Peeters Grietens K, Shaffer J, De Laat S, Solomon N, Parker M, **Suwalaska H**, Kingori P. Global health photography behind the façade of empowerment and decolonisation. *Global Public Health*. 2024 Dec 31;19(1).

Ali J, Esmonde K, Agudelo-Londoño S, Jannat Z, Shrestha P, Torres-Quintero A, et al. “Digital benefit sharing” for non-communicable disease risk factor surveillance in low- and middle-income countries: implications for digital health governance. *Policy Studies*. 0(0):1–18.

Ali J, Gopalan N, editors. *Cases in Bioethics: Health Research Ethics in Southeast Asia*. *Johns Hopkins University Press*; 2024.

Altieri De Jesus V, **Beach MC**, Hannum SM, Saha S, Schoenborn N. A National Survey—Do Women 65 Years or Older Perceive Persuasion to Stop Getting Mammograms as Ethically Appropriate? *J GEN INTERN MED*. 2025 Apr 3.

Ambrosino CM, Guo X, Nguyen A, Kallem M, Dai X, Kourgalis N, et al, including **Collins ME**. Practices of a United States school-based vision program in referring children to community eye care. *Journal of American Association for Pediatric Ophthalmology and Strabismus*. 2025 Apr 1;29(2):104164.

Ambrosino CM, Killen OJ, **Collins ME**. Pediatric Eye Care in Federally Qualified Health Centers. *JAMA Health Forum*. 2025 Apr 18;6(4):e250414.

Amon JJ, **Rubenstein L**. Drone Attacks on Health in 2023. *Health Hum Rights*. 2024 June;26(1):143–6.

Angus DC, Huang AJ, Lewis RJ, Abernethy AP, Califf RM, Landray M, et al, including **Kass N**. The Integration of Clinical Trials With the Practice of Medicine: Repairing a House Divided. *JAMA*. 2024 July 9;332(2):153.

Arguedas-Ramirez G, Speed E, **Berger ZD**, Mannion R. Pandemics, populism and bioethics: A critical approach. *Medina Arellano MDJ, editor. PLOS Glob Public Health*. 2025 May 20;5(5):e0004576.

Arnold RW, Birch E, Bradford G, **Collins M**, Donahue SP, Gaier ED, et al. Defining and measuring population-level amblyopia treatment outcomes: a proposal by the AAPOS Vision Screening and Research Committees. *Journal of American Association for Pediatric Ophthalmology and Strabismus*. 2025 May 29;104231.

Avery RK, **Kates OS**, Saharia KK, Lindner BK, Baddley JW, Karaba AH. Optimizing IVIG in Xenotransplantation: A Call to Action. *Transplantation*. 2025 Apr 1.

Barnhill A, Bonotti M. Rethinking healthy eating policy and public reason: a reply to commentators. *Critical Review of International Social and Political Philosophy*. 2025 May 17;1–9.

Batson L, Donohue PK, Jarrah ME, Smith BM, Nalda C, **Seltzer RR**. The Home-Built Environment of Children With Medical Complexity. *Clin Pediatr (Phila)*. 2025 July;64(7):924–35.

Beach MC, Saha S. The Credibility Deficit Experienced by Black Patients. *JAMA Network Open*. 2024 Oct 14;7(10):e2438521.

Bedrick BS, Hamilton S, **Sufrin C**. Assessment of menstrual material needs as a measure of health and menstrual equity in the postpartum period. *Sexual & Reproductive Healthcare*. 2025 June 1;44:101108.

Bennett S, **Merritt MW**. Implications of the fair processes for financing UHC report for development assistance: reflections and an application of the decision-making principles to PEPFAR. *Health Economics, Policy and Law*. 2025 Jan;20(1):26–33.

Berger Z. Health system mistrust, ultra-orthodox Jews in the US, and vaccine hesitancy. *Journal of Biosocial Science*. 2025 Mar;57(2):195–200.

Berger Z. How Gatekeepers Can Better Appreciate the Autonomy of Transgender Patients. *J GEN INTERN MED*. 2025 Feb 18.

Bergman A, Nelson K, Boyce D, Hanson G, Reina M, **Rushton C**. Moral resilience and moral injury of nurse leaders during crisis situations: A qualitative descriptive analysis. *Nursing Management*. 2024 Dec;55(12):16.

Bottini Filho L, **Abdool Karim S**, Hodgson TF. Vaccine Inequity in the COVID-19 Crisis: Lessons to Leverage Global Health Law through Market-Shaping Policies. *J Law Med Ethics*. 2025;53(S1):51–4.

Boyd L. How to Integrate Neuroethics into a Neuroscience Course – And Drive Student Engagement with Core Concepts. *Journal of Undergraduate Neuroscience Education*. 2024 Dec;23(1):26–34.

Bradley DL, Kramer CT, **Sufrin CB**, Scott KA, Hayes CM. “Because I Was a Criminal and Drug Addict.”: Experiences of Anti-Black Gendered Racism and Reproductive Injustice Among Black Pregnant and Postpartum Women with a Substance Use Disorder and Incarceration and Family Policing Histories. *J Racial and Ethnic Health Disparities*. 2025 Aug 1;12(4):2204–20.

Brems JH, Vick J, Ashana D, **Beach MC**. “Against Medical Advice” Discharges After Respiratory-Related Hospitalizations: Strategies for Respectful Care. *CHEST*. 2024 Nov 1;166(5):1155–61.

Cai C, Connor KA, Johnson SB, **Collins ME**. Maximizing Parental Engagement in School-Based Vision Programs. *Journal of School Health*. 2025;95(6):466–8.

Chalfie M, **Rubenstein L**, Alqodmani L, Benjamin GC, Cipriano PF, Rio C del, et al. Mobilising the health community to protect health care from attack. *The Lancet*. 2024 Dec 14;404(10470):2399–402.

Cheung K, Earp BD, Patch K, Yaden DB. Distinctive But Not Exceptional: The Risks of Psychedelic Ethical Exceptionalism. *The American Journal of Bioethics*. 2025 Jan 2;25(1):16–28.

Cheung K, Ehrenkranz R, Hinkle JT, Yaden DB. Commentary: A framework for assessment of adverse events in psychedelic research. *J Psychopharmacol*. 2024 Dec 29;02698811241309623.

Cheung K, Ehrenkranz R, Yaden DB. Enhanced independence: De-biasing processes in psychedelic research and beyond. *Research Ethics*. 2025 Apr 2;17470161251326588.

Cohen PD, **Boss RD**, Stockwell DC, Bernier M, Collaco JM, Kudchadkar SR. Perspectives on non-emergent neonatal intensive care unit to pediatric intensive care unit care transfers in the United States. *World Journal of Critical Care Medicine*. 2024 Dec 9.

Cohn B, Prince AER, Callahan K, Roberts JS, Vogle A, **Mathews DJH**, et al. Workplace Genomic Testing: What Do Company Websites Say about Federal Privacy and Anti-Discrimination Laws? *Public Health Genomics*. 2025 May 3;28(1):190–5.

Collins ME, Scott AW. Racial and Ethnic Disparities in Pediatric Ophthalmology Research. *JAMA Ophthalmology*. 2024 Oct 1;142(10):933–4.

Curtis LH, **Morain S**, O'Rourke PP, Staman K, Jarvik JG, Chevillat A, et al. Monitoring in pragmatic trials lessons from the NIH pragmatic trials collaborative. *Contemporary Clinical Trials*. 2025 May 1;152:107866.

Dewan A, Eifler M, **Hood A**, Sanchez W, Gross M. Building a Decentralized Biobanking App for Research Transparency and Patient Engagement: Participatory Design Study. *JMIR Hum Factors*. 2025 Mar 5;12:e59485.

Dey T, Widmer M, Coomarasamy A, Goudar SS, Berrueta M, Coutinho E, et al, including **Faden RR**, Mastroianni AM. Advancing maternal and perinatal health through clinical trials: key insights from a WHO global consultation. *The Lancet Global Health*. 2025 Apr;13(4):e740–8.

Dickert NW, Spiegelman D, Blumenthal-Barby JS, Graham G, Joffe S, Kahn JM, et al, including **Kass NE**. Ethical issues in implementation science: perspectives from a National Heart, Lung, and Blood Institute workshop. *Implementation Science*. 2024 Nov 19;19(1):77.

Dinkiyé M, Abdissa D, Hailu T, Shad AT, **Unguru Y**. Clinical Profile of Pediatric Solid Tumors: Experience From a Tertiary Care Center in Ethiopia. *Cancer Reports*. 2025;9(5):e70222.

Dubé K, Patel H, Meanley S, Dee L, Korolkova A, Wan F, et al, including **Sugarman J**. Lessons Learned in Eliciting Systematic Participant Perspectives in a Combination HIV Cure Research Trial. *AIDS Research and Human Retroviruses*. 2025 May 1;41(5):241–52.

Durand CM, Prizzi M, Sung H, **Kates OS**, Tobian AAR, Karaba AH, et al. Building a successful transplant research center: Blueprints and barriers. *Transplant Infectious Dis*. 2024 Dec;26(6).

Eitington J, Doberman D, **Berger Z**, Tapper CX. End-of-life care for the devout Jewish patient. *Evaluation Clinical Practice*. 2025 Feb;31(1).

Elias JJ, Lacetera N, **Macis M**. Is the Price Right? The Role of Economic Tradeoffs in Explaining Reactions to Price Surges. *National Bureau of Economic Research*; 2024. (Working Paper Series).

Esmonde K, Jones J, Johns M, Hutler B, **Faden R**, **Barnhill A**. “Lives versus livelihoods”: Conflict and coherence between policy objectives in the COVID-19 pandemic. *Social Science & Medicine*. 2024 Sept;357:117188.

Evans J, Aixelà M, Anderson BT, Brennan W, Bremner R, Breeksema JJ, et al, including **Cheung K**. On Minimizing Risk and Harm in the Use of Psychedelics. *PRCP*. 2025 Mar 1;7(1):4–8.

Ferryman K, Crews DC, Drabo EF, Iwashyna TJ, **Kane O**, Jackson JW. Adherence to FDA Guidance on Pulse Oximetry Testing Among Diverse Individuals, 1996–2024. *JAMA*. 2024 Dec 30.

Forman L, **Abdool Karim S**, Kolawole O. Global Health “With Justice”: The Challenges and Opportunities for Human Rights in Global Health Law. *Journal of Law, Medicine & Ethics*. 2025 Mar;53(S1):18–22.

Formentos A, Flaubert JL, Boman A, editors, participants include **Ferryman K**. Diagnosis in the Era of Digital Health and Artificial Intelligence: Proceedings of a Workshop—in Brief. *Washington, D.C.: National Academies Press*; 2024.

Foster C, Lin E, Feinstein JA, **Seltzer R**, Graham RJ, Coleman C, et al. Home Health Care Research for Children With Disability and Medical Complexity. *Pediatrics*. 2025 Feb 1;155(2).

Foti N. Beyond biomedical institutions: An ethnographic study of community science and the rise of alternative therapeutic imaginaries. *Social Science & Medicine*. 2025 Feb;367:117377.

Fraiman YS, Barrero-Castillero A, **Boss RD**. The ethical imperative to pursue neonatal health equity and justice. *Seminars in Perinatology*. 2025 May;152096.

Franklin JB, Marra C, Abebe KZ, Butte AJ, Cook DJ, Esserman L, et al, including **Kass NE**. Modernizing the Data Infrastructure for Clinical Research to Meet Evolving Demands for Evidence. *JAMA*. 2024 Oct 22;332(16):1378.

Gopalan N, Khan RI, Silverman HJ, **Sugarman J**, Vaswani V. Enhancing Research Ethics Capacity in Asia: Fogarty International Center Supported Initiatives in India, Malaysia, Myanmar, and Pakistan. *Journal of Empirical Research on Human Research Ethics*. 2025 Mar 17;15562646251323133.

Greene J. Abusive medical research, whistleblowers, and institutional power. *The Lancet*. 2024 Sept;404(10458):1094–5.

Guttmann KF, **Boss RD**, Smith CB, Arnold RM. What Would You Do if It Were Your Child? #497. *Journal of Palliative Medicine*. 2025 Mar 1;28(3):411–2.

Hassan B, Zeitouni F, Ascha M, Sanders R, **Berger Z**, Fields E, et al. Breast Surgery in Adolescents: Cisgender Breast Reduction Versus Transgender and Nonbinary Chest Masculinization. *Ann Plast Surg*. 2024 Aug;93(2):194–9.

Hauschildt KE, Bernstein T, Crews DC, Drabo EF, **Ferryman K**, Jackson JW, et al. Health System Purchasing Professionals’ Approaches to Considering Equity in Procurement. *CHEST*. 2025 Mar 1;167(3):831–41.

Haylock M, Kampkötter P, **Macis M**, Seitz S, Slonim R, Wienand E, et al. How perceptions of bone marrow donation costs affect donation behavior: survey evidence from a large donor registry. *Eur J Health Econ*. 2025 May 27.

Heidari O, **Sugarman OK**, Winiker AK, Gattine S, Flanagan V, Razaghi R, et al. Personal Experiences With Xylazine and Behavior Change: A Qualitative Content Analysis of Reddit Posts. *Journal of Addiction Medicine*. 2025 Apr;19(2):135.

Hoffmann DE, **Javit GH**, Kelly CR, Keller JJ, Baunwall SMD, Hvas CL. Fecal microbiota transplantation: a tale of two regulatory pathways. *Gut Microbes*. 2025 Dec 31;17(1):2493901.

Holtz H, McQueen A, Weissinger G, Alderfer M, Swavely D, Sledge JA, et al, including **Rushton, C**. The Impact of Transitional Shock on Newer Nurses in a Contemporary Healthcare Environment. *JNURSADM*. 2024 Sept 1;54(9):507–13.

House J, Lacetera N, **Macis M**, Mazar N. Nudging the nudger: Performance feedback and organ donor registrations. *Journal of Health Economics*. 2024 Sept 1;97:102914.

Johnson ED, **Boss RD**, Park WY, Aziz KB. Time Toxicity: Quantifying Healthcare Utilization Attributable to Pediatric Home Ventilation. *Pediatric Pulmonology*. 2025 Apr;60(4):e71081.

Johnson LM, Sharma A, Carroll Y, Goodson D, Mandrell BN, Gattuso J, et al, including **Unguru Y**. Listening to patients and parents with sickle cell disease: the totality of gene therapy risks may outweigh the perceived benefits. *Blood Advances*. 2024 Nov 12;8(21):5723–4.

Jones J, **Barnhill A**, Esmonde K, Hutler B, Johns M, **Faden R**. Views From State-Level Policy Actors About the US Federal Government COVID-19 Response. *Health Security*. 2025 Feb 1;23(1):1–8.

Jones J, Karim SA, **Faden R**, Esmonde K, Hutler B, Johns M, **Barnhill A**. Under-Funded and Under-Pressure: State Epidemiologists During the COVID-19 Response. *Disaster med public health prep*. 2025;19.

Jones J, Lignou S, **Unguru Y**, Sheehan M, Dunn M, **Seltzer RR**. Alterations in care for children with special healthcare needs during the early COVID-19 pandemic: ethical and policy considerations. *Monash Bioeth Rev*. 2024 Dec 11.

Jonlin EC, Fujita M, Isasi R, Kato K, Munsie M, Muto K, et al, including **Sugarman J**. What does “appropriate scientific justification” mean for the review of human pluripotent stem cell, embryo, and related research? *Stem Cell Reports*. 2025 May 13;20(5):102479.

Jose S, **Bollinger J**, **Geller G**, **Greene J**, **Henry LM**, Hutler B, et al, including **Kahn J**, **Mastroianni A**, **Mathews DJH**. Blurring Boundaries: A Proposed Research Agenda for Ethical, Legal, Social, and Historical Studies at the Intersection of Infectious and Genetic Disease. *Journal of Law, Medicine & Ethics*. 2024 June;52(2):443–55.

Kahn J, Smith C, Worku T, Shore C. Regulatory processes for rare disease drugs in the United States and European Union: flexibilities and collaborative opportunities. *Washington: National Academies Press*; 2024.

Kallem M, Guo X, Dai X, Ambrosino C, Nguyen A, Friedman DS, et al, including **Collins M**. Associations between School-Based Vision Program Outcomes and School Characteristics in 410 Schools. *Ophthalmology*. 2024 Nov 12;0(0).

Karim SA, Moyo B, Walls H. Advancing whose interests? Corporate strategy and risks to food systems transformation and public health nutrition through academic partnerships in Africa. *BMJ Glob Health*. 2025 Jan 19;10(1).

Kass NE, **Faden RR**, Angus DC, **Morain SR**. Making the Ethical Oversight of All Clinical Trials Fit for Purpose. *JAMA*. 2025 Jan 7;333(1):75–80.

Kass NE, Meeker-O’Connell A, **Morain SR**, Crane MA. Optimizing Informed Consent—A Call to Action. *JAMA Health Forum*. 2025 May 2;6(5):e250824.

Kates O, Lahey T. Welcome to Ethics Rounds. *Clinical Infectious Diseases*. 2025 May 23.

Kates OS, McDade H, Tinney FJ, Weeks-Groh SR, Lurain K. HHV-8-associated diseases in transplantation: A case report and narrative review focused on diagnosis and prevention. *Transplant Infectious Dis*. 2024 Nov;26(S1).

Kates OS, Shah M. Integrating Ethics in Public Health Guideline Development: Case Study of Guidelines on Respiratory Isolation for Persons With Tuberculosis in Community Settings. *The Journal of Infectious Diseases*. 2025 Jan 15;231(1):23–30.

Kates OS. What Is Antimicrobial Stewardship? *AMA Journal of Ethics*. 2024 June 1;26(6):E437-440.

Kelly M, Vick JB, McArthur A, **Beach MC**. The last word: An analysis of power dynamics in clinical notes documenting against-medical-advice discharges. *Social Science & Medicine*. 2024 Sept 1;357:117162.

Koloi-Keaikitse S, **Geller G**, Jankie D, **Ali J**. Nature and value of health research: perspectives from local communities in Botswana. *Research Ethics*. 2025 Mar 12;17470161251319130.

Korolkova A, Ndukwe SO, Dee L, Deeks SG, Peluso MJ, Hoh R, et al, including **Sugarman J**. Recall and Appraisal of the Risks, Benefits, and Objectives of Interrupting HIV Treatment in an HIV Cure-Related Study. *AIDS Behav*. 2024 Dec;28(12):4136–45.

Kostandova N, O'Keefe J, Ali BB, Somsé P, Mahieu A, Bingou OG, et al, including **Rubenstein L**. "It's normal to be afraid": attacks on healthcare in Ouaka, Haute-Kotto, and Vakaga prefectures of the Central African Republic, 2016–2020. *Conflict and Health*. 2024 Aug 27;18(1):54.

Kotlar B, Yousafzai A, **Sufrin C**, Jimenez M, Tiemeier H. "The system's not getting my grandchild": A qualitative study of caregiver relationship formation for children born to incarcerated mothers. *Social Science & Medicine*. 2025 Apr 1;370:117881.

Kramer C, Lenz C, Song M, **Sufrin C**, Kennedy-Hendricks A, Fingerhood M, et al, including Saloner B. State-Mandated Opioid Use Disorder Treatment in Maryland Jails Helped Patients Recover Despite Gaps in Care: Article examines state-mandated opioid use disorder treatment for recently incarcerated people. *Health Affairs*. 2025 May 1;44(5):614–21.

Kramer CT, Thomas K, Hayes CM, Su V, **Sufrin CB**. "I'm Giving Birth in Thirty Days, and I Still Know Nothing": A Qualitative Analysis of Incarcerated Pregnant Women's Perceptions While Considering a Prison Nursery Program. *Women & Criminal Justice*. 2025 Apr 17;1–18.

Lanata CF, Ochoa TJ, Bancalari EM, Baylor NW, Edwards K, **Faden RR**, et al. Testing an experimental vaccine during a public health emergency: Lessons from a Peruvian case. *Vaccine*. 2025 May 22;56:127176.

Largent EA, Joffe S, Dickert NW, **Morain SR**. The ethical value of consulting community members in non-emergency trials conducted with waivers of informed consent for research. *Clinical Trials*. 2025 Feb;22(1):100–8.

Lazzara A, **Boss RD**. Ethical Complexities of Neonatal Neurocritical Care. *Clinics in Perinatology*. 2025 June 1;52(2):439–48.

Lovejoy TI, Midboe AM, Higgins DM, **Ali J**, Kerns RD, Heapy AA, et al. Optimizing diversity, equity and inclusion in pragmatic clinical trials: Findings from the Pain Management Collaboratory. *The Journal of Pain*. 2024 Nov 3;0(0).

Lowe C, **Beach MC**, Erby LH, Biesecker BB, Joseph G, Roter DL. Effects of Implicit Racial Bias and Standardized Patient Race on Genetic Counseling Students' Patient-Centered Communication. *Health Communication*. 2025 Mar 21;40(4):679–90.

Lowe C, Duncan L, Morris V, Anderson K, Dratch L, **Mathews DJH**. Navigating the impact of the 21st-Century Cures Act Final Rule: A national cross-sectional survey of US genetic counselors. *Journal of Genetic Counseling*. 2025;34(3):e70005.

Lyerly AD, **Faden RR**, Mello MM. Beneath the Sword of Damocles: Moral Obligations of Physicians in a Post-Dobbs Landscape. *Hastings Center Report*. 2024 May;54(3):15–27.

Macis M, Plummer E. How to Increase Living Kidney Donation—A Tale of Two Donors. *JAMA Internal Medicine*. 2024 Dec 16.

Marsh LN, Kramer C, Shlafer RJ, **Sufrin CB**. Impacts of the COVID-19 pandemic on the experiences of incarcerated pregnant people. *Health & Justice*. 2024 Oct 19;12(1):40.

Martinez NG, Kramer CT, Hayes CM, Motlagh-Harvey AS, Tikofsky SY, **Sufrin CB**. Social workers' perspectives on anti-Black racism and parenting outcomes for incarcerated pregnant women with substance use histories. *Journal of Social Work*. 2025 May;25(3):279–300.

Mastroianni AC, **Henry LM**. Opportunities to Advance Maternal Immunization Research. *Pediatric Infectious Disease Journal*. 2025 Feb;44(2S):S16–7.

McGill LS, Sánchez González ML, Bediako SM, Lanzkron SM, Yu L, **Beach MC**, et al. Impact of disease- and race-based discrimination in health care on pain outcomes among adults living with sickle cell disease in the United States: The mediating roles of internalized stigma and depressive symptoms. *Stigma and Health*. 2024;

Mehl KR, **Morain SR**, Largent EA. The Importance of Including Underserved Populations in Research. *Pharm Med*. 2025 Mar 1;39(2):59–71.

Moale AC, Kurukulasuriya CE, Layshock MN, Cheng S, Arnold RM, **Boss RD**, et al. Families' Experiences Making Decisions across Time and Settings in Chronic Critical Illness. *Annals ATS*. 2025 May 29.

Montgomery T, Hickingbotham MR, Smith HS. Preferences for genetic testing among populations underrepresented in genomic research: a systematic review. *Eur J Hum Genet*. 2025 June;33(6):814–8.

Moon M. Module 7. Ethical Issues in the Care of Adolescents. In: Bioethics Case Based Teaching Guides for Resident Training. *American Academy of Pediatrics*; 2025.

Morain SR, **Bollinger J**, Singleton MK, Terkowitz M, Weston C, **Sugarman J**. Local context review by single institutional review boards: Results from a modified Delphi process. *Journal of Clinical and Translational Science*. 2025 Jan;9(1):e2.

Morain SR, Brickler A, **Ali J**, O'Rourke PP, Spector-Bagdady K, Wilfond B, et al, including Propes C, Mehl K. Ethical considerations for sharing aggregate results from pragmatic clinical trials. *Clinical Trials*. 2025 Apr 1;22(2):248–54.

Morain SR, O'Rourke PP, Ali J, Rahimzadeh V, Check DK, Bosworth HB, **Sugarman J**. Post-trial responsibilities in pragmatic clinical trials: Fulfilling the promise of research to drive real-world change. *Learning Health Systems*. 2024 July;8(3).

Morain SR, Semler MW, Casey JD. A framework for health systems to assess and prioritize participation in pragmatic clinical trials. *Learning Health Systems*. n/a(n/a):e70016.

Morain SR, Singleton MK, Tsiandoulas K, **Bollinger J**, **Sugarman J**. Single IRB Review and Local Context Considerations: A Scoping Review. *Ethics & Human Research*. 2024 July;46(4):17–26.

Nankya H, **Mathews D**, **Ferryman K**, **Kane O**, **Ali J**. Community engagement for artificial intelligence health research in Africa. *Wellcome Open Res*. 2025 Mar 20;10:158.

Nguyen PL, Moreno JA, Tran D, McHugh K, Woreta FA, **Collins ME**, et al. Baseline Characteristics and Clinical Outcomes of Patients Seen Through the Free Diabetes Screening (FDS) Program. *OPHTH*. 2024 Nov 11;18:3227–36.

O'Rourke PP, **Ali J**, Carrithers J, Magnus D, Wilfond BS, Bull S, et al. Disentangling informing participants from obtaining their consent. *Learning Health Systems*. n/a(n/a):e70014.

Pang J, Batson L, Detwiler K, Miller ME, Thorndike D, **Boss RD**, et al. Where do families turn? Ethical dilemmas in the care of chronically critically ill children. *Monash Bioeth Rev*. 2024 July 8.

Pickard H. Craving for drugs. *Mind & Language*. 2024 Nov;39(5):598–626.

Pierson E, Shanmugam D, Movva R, Kleinberg J, Agrawal M, Dredze M, et al, including **Ferryman, K**. Using Large Language Models to Promote Health Equity. *NEJM AI*. 2025 Jan 23;2(2):Alp2400889.

Propes C, Locke T, Hendricks-Sturup R. Landscape of informed consent practices and challenges in point-of-care clinical trials. *Learning Health Systems*. 2025 Mar 3.

Propes C, **Mehl K**, **Morain SR**. Untapped Potential? Representativeness in Pragmatic Clinical Trials. *JAMA*. 2025 Feb 4;333(5):375–6.

Propes C, O'Rourke PP, **Morain SR**. Recurring and Emerging Ethical Issues in Pragmatic Clinical Trials. *Circ Cardiovascular Quality and Outcomes*. 2024 July ;17(7).

Rieder TN, **Modlin C**. How Should We Think About Clinicians' Individual Antibiotic Stewardship Duties? *AMA Journal of Ethics*. 2024 June 1;26(6):E479–485.

Rieder TN. Ethical justifications for safe supply interventions. *International Journal of Drug Policy*. 2025 Mar;137:104710.

Rieder TN. Moral Humility for a Complex World. *Hastings Center Report*. 2024;54(6):2–2.

Rubashkin N, Asiodu IV, Vedom S, **Sufrin C**, Kuppermann M, Adams V. Automating Racism: Is Use of the Vaginal Birth After Cesarean Calculator Associated with Inequity in Perinatal Service Delivery? *J Racial and Ethnic Health Disparities*. 2024 Dec 14.

Rubenstein L. Medical Neutrality and Political Engagement. In: Messelken D, Barbar AE, editors. *Challenging Medical Neutrality: Healthcare ethics in armed conflict and other complex settings*. Cham: Springer Nature Switzerland; 2024. p. 189–207.

Rushton C, Zwemer W. Can this marriage be saved? Nurses and health systems in crisis. *American Nurse*. 2024.

Rushton CH, Uveges MK. Enduring Ethical Issues: Looking Back, Looking Forward. *AACN Advanced Critical Care*. 2025 Mar 15;36(1):21–2.

Rushton CH. Phases of Suffering: A Roadmap for Moral Repair. *AACN Advanced Critical Care*. 2024 Dec 15;35(4):366–73.

Rushton CH. Self-Stewardship: An Ethical Imperative for Nurses. *AACN Advanced Critical Care*. 2024 June 15;35(2):193–8.

Rushton CH. Why Integrity Matters for Nurse Leaders: A Case Application. *Nurse Leader*. 2025 Jan 23;0(0).

Saha S, **Beach MC**. Building a Culture of Quality and Safety in Health Care—The Importance of Respect for Patients. *JAMA Netw Open*. 2024 Dec 17;7(12):e2450134.

Sanchez W, Dewan A, Budd E, Eifler M, Miller RC, **Kahn J**, **Macis M**, Gross M. Decentralized Biobanking Apps for Patient Tracking of Biospecimen Research: Real-World Usability and Feasibility Study. *JMIR Bioinform Biotech*. 2025 Apr 10;6:e70463.

Savin K, Guidry-Grimes L, **Kates OS**. What Does Disability Justice Require of Antimicrobial Stewardship? *AMA Journal of Ethics*. 2024 June 1;26(6):448–55.

Schoenborn NL, Hannum SM, Gollust SE, Nagler RH, Schonberg MA, Pollack CE, et al, including **Beach MC**. Older women's perspectives on the ethics of persuasion in doctor-patient communication. *J American Geriatrics Society*. 2024 Oct;72(10):3179–87.

Schuster ALR, **Bollinger J**, **Geller G**, Little SJ, Mehta SR, Sanchez T, et al, including **Sugarman J**. Prioritization of ethical concerns regarding HIV molecular epidemiology by public health practitioners and researchers. *BMC Public Health*. 2024 May 29;24(1).

Schuster ALR, Folta A, **Bollinger J**, **Geller G**, Mehta SR, Little SJ, et al, including **Sugarman J**. User experience with HIV molecular epidemiology in research, surveillance, and cluster detection and response: a needs assessment. *Current Medical Research and Opinion*. 2024 Nov;40(11):1873–83.

Sekimitsu S, **Collins ME**, Zebardast N. US children from non-English-speaking households are less likely to undergo vision testing. *Journal of American Association for Pediatric Ophthalmology and Strabismus*. 2025 Feb 1;29(1):104110.

Shachar C, Drabo EF, Iwashyna TJ, **Ferryman K**. Addressing Racial and Ethnic Bias in Pulse Oximeters—A Wicked Problem. *JAMA*. 2024 Dec 30.

Shapiro MC, Detwiler K, Shepard J, Bernhard T, Li X, **Boss RD**, et al. Ethical Challenges in Pediatric Medical Complexity: A Survey of Parents. *The Journal of Pediatrics*. 2025 Jan 24;0(0).

Shoham S, Thapaliya S, Avery R, Baddley J, Dioverti V, Durand C, et al, including **Kates O**. Multiple dimensions of neurological injury in a liver transplant recipient with cryptococcal meningitis. *ASM Case Reports*. 2024 Dec 12;1(1):e00040–24.

Shore CK, Worku TL, **Kahn J**. Rare Disease Innovation at the FDA—Opportunities for Implementation. *JAMA*. 2024 Dec 17;332(23):1973–4.

Smith HJ, Agans RT, Kowallis WJ. Ethical Considerations for Wastewater Surveillance Conducted by the US Department of Defense. *JMIR Public Health Surveill*. 2025 Feb 6;11:e67145–e67145.

Smith HJ, Myers MA, Wagner AL, Krick JA. A Scalpel, Not a Sword: The Case for Narrow Medical Sanctions. *The American Journal of Bioethics*. 2025 Apr 3;25(4):22–4.

Smith HS, Regier DA, Goranitis I, Bourke M, IJzerman MJ, Degeling K, et al, including **Montgomery T**. Approaches to Incorporation of Preferences into Health Economic Models of Genomic Medicine: A Critical Interpretive Synthesis and Conceptual Framework. *Appl Health Econ Health Policy*. 2025 Jan 20.

Soley N, Rattsev I, Speed TJ, Xie A, **Ferryman KS**, Taylor CO. Predicting postoperative chronic opioid use with fair machine learning models integrating multi-modal data sources: a demonstration of ethical machine learning in healthcare. *Journal of the American Medical Informatics Association*. 2025 June 1;32(6):985–97.

Sommerhalder MS, **Seltzer RR**, Meyers DL, Thompson BS, Barnett S. Navigating the Ethical Dilemmas of Youth Boarding in the Emergency Department: Strategies for Respecting Developing Autonomy While Also Reducing Risk. *The American Journal of Bioethics*. 2024 July 2;24(7):135–9.

Song S, Ashton M, Yoo RH, Lkhagvajav Z, Wright R, **Mathews DJH**, et al. Participant Contributions to Person-Generated Health Data Research Using Mobile Devices: Scoping Review. *J Med Internet Res*. 2025 Jan 20;27:e51955.

Srisuranont K, Lerttiendamrong B, Meejun T, Thanakitcharu J, Manothummetha K, Thongkam A, et al, including **Kates OS**. Candidemia Following Severe COVID-19 in Hospitalised and Critical Ill Patients: A Systematic Review and Meta-Analysis. *Mycoses*. 2024 Oct;67(10).

Street A, Stringer R, Mangesho P, Ralston R, **Greene J**. Why medical products must not be excluded from the Global Plastics Treaty. *The Lancet*. 2024 Nov;404(10464):1708–10.

Streicher S, Register C, Lim X, Bariş M, Porsdam Mann S, **Cheung K**, et al. Psychedelics as moral bioenhancers: Protocol for a scoping review of ethical arguments for and against. *Wellcome Open Res*. 2025 Jan 13;10:3.

Strobeyko A, Atuire CA, **Faden R**, Ho CWL, Ido V, Kamal-Yanni M, et al. Equitable access to pandemic products demands stronger public governance. *The Lancet*. 2024 Nov 23;404(10467):2030–2.

Sufrin C. Selections from Jailcare: Finding the Safety Net for Women Behind Bars. In: *Reproduction and Society*. 2nd ed. Routledge; 2025.

Sugarman J, **Bollinger J**, Agostini J, Weinfurt K, **Geller G**, Jose S, et al, including **Henry LM**. Impact of Disclosing to Patients the Use of Antiretroviral Resistance Testing Results for Molecular HIV Surveillance: A Randomized Experiment in 2 National Surveys. *JMIR Public Health Surveill*. 2025 Apr 11;11:e64663–e64663.

Sugarman J, Vayena E. Accurately Understanding the Potential Benefits of Decentralized Clinical Trials. *The American Journal of Bioethics*. 2025 May 4;25(5):81–3.

Sugarman J. Articulating the need to minimize moral incursions in research. *EMBO reports*. 2025 June 24;26(12):2973–6.

Trejbalova T, **Sufrin CB**, Kotlar B, Saunders J, Mason E, Sherman J, et al. Right to "Life": The Cruel Contradiction of Exceptions to the Death Penalty for Pregnant People. *The Prison Journal*. 2024 Sept;104(4):449–71.

Turchi RM, Kuo DZ, Rusher JW, **Seltzer RR**, Lehmann CU, Grout RW, et al. Considerations for Alternative Decision-Making When Transitioning to Adulthood for Youth With Intellectual and Developmental Disabilities: Policy Statement. *Pediatrics*. 2024 May 28;153(6):e2024066841.

Uberoi D, Dalpé G, **Cheung K**, Kondrup E, Palmour N, Arawi T, et al. The Key Features of a Genetic Nondiscrimination Policy: A Delphi Consensus Statement. *JAMA Netw Open*. 2024 Sept 26;7(9):e2435355.

Unguru Y, Okoro E, Okoro AT. Gene Therapy for Sickle Cell Disease: Striking a Balance Between Approved Therapies and Clinical Trials. *The American Journal of Bioethics*. 2025 Apr 3;25(4):151–3.

Unguru Y. Module 3. Informed Consent and Assent in Pediatrics. In: Bioethics Case Based Teaching Guides for Resident Training. *American Academy of Pediatrics*; 2025.

Valenzuela Lara M, Sanchez TH, **Bollinger JM**, **Geller G**, Little SJ, **Sugarman J**. Perceptions of Molecular HIV Surveillance Among Men Who Have Sex with Men in the United States. *AIDS Behav*. 2025 Mar 1;29(3):760–8.

Vermilion P, **Boss R**. Pediatric Perspectives on Palliative Care in the Neurocritical Care Unit. *Neurocrit Care*. 2024 Dec 1;41(3):739–48.

Vinogradov V, Lee YG, Zhakupova G, Mergenova G, Davis A, Paine EA, et al, including **Sugarman J**. Social Impacts of Multi-City HIV Research Participation Among Sexual and Gender Expansive Individuals in Kazakhstan. *JAIDS Journal of Acquired Immune Deficiency Syndromes*. 2025 July 1;99(3):239–47.

Võ HH, **Seltzer RR**, Scott M, Feudtner C, Foster C. Safe Enough: Subjective Determinations in Hospital Discharge for Patients With Medical Complexity. *Pediatrics*. 2025 June 1;155(6):e2024067585.

Wang EY, Pan A, Srinivas T, Loftus J, **Geller G**, **Carrese JA**, et al. Patient and Physician Perspectives on Discussing Addiction Recovery and Spirituality in the Primary Care Setting. *J GEN INTERN MED*. 2024 Dec;39(16):3182–9.

Wolf LE, **Ram N**. Act on a mandate to protect research subjects' privacy. *Science*. 2024 Dec 6;386(6726):1096–7.

Zavala E, Doggett E, Nicklin A, Karron RA, **Faden RR**. Gender equity and COVID-19 vaccine policies for pregnant people: a global analysis. *International Journal for Equity in Health*. 2025 May 7;24(1):127.

Berman Institute faculty play a vitally important role in informing the public about bioethics issues and helping shape policy by sharing their insight and expertise through media interviews. The following is a partial list, arranged in reverse chronological order, of media appearances during the 2024-2025 academic year.

STAT | JUNE 13, 2025

RFK Jr.'s new vaccine panel raises questions of how Kennedy defines conflicts of interest
Featuring Jeffrey Kahn

STAT (commentary) | JUNE 3, 2025

RFK Jr.'s stance on Covid vaccines for pregnant women is profoundly unethical
Authored by Ruth Faden

Ethics In Practice (podcast) | MAY 23, 2025

Building, challenging and transforming systems in bioethics
Featuring Joe Ali (featured guest)

The Guardian | MAY 19, 2025

Attacks on healthcare in war zones in 2024 reach 'new levels of horror' – report
Featuring Len Rubenstein

Florida Politics | APRIL 21, 2025

Legislature again shuts out proposal to better protect pregnant prisoners
Featuring Carolyn Sufrin

Wall Street Journal | MARCH 26, 2025

Chinese scientist ostracized over gene-edited babies seeks comeback
Featuring Jeffrey Kahn

STAT | MARCH 24, 2025

Lawmakers are pushing the HALT Fentanyl Act as the solution to the overdose crisis. Experts warn it will fall short
Featuring Travis Rieder

Sunday Times (commentary) | MARCH 17, 2025

Take the sugar industry's 'sugar tax' claims with a pinch of salt
Authored by Safura Abdool Karim

MedTechDive | MARCH 10, 2025

New FDA pulse oximetry guidelines could stall under Trump
Featuring Kadija Ferryman

Authority Magazine | MARCH 5, 2025

5 things we need to do to improve the US healthcare system
Featuring Hunter Jackson Smith (featured guest)

Democracy Now! | FEBRUARY 17, 2025

Patients "abandoned": Trump order to halt global medical trials "profoundly unethical," says Dr. Faden
Featuring Ruth Faden (featured guest)

STAT (commentary) | FEBRUARY 16, 2025

The abrupt end of USAID-funded clinical trials is profoundly unethical
Authored by Ruth Faden and Nancy Kass

Law360 | Healthcare Authority | JANUARY 21, 2025

Experts see hope, flaws in FDA's oxygen test bias guidance
Featuring Kadija Ferryman

The New York Times | JANUARY 13, 2025

Have Americans ever really been healthy?
Featuring Jeremy Greene

STAT | DECEMBER 30, 2024

Fixing pulse oximeters requires federal might and possible legal action, researchers say
Featuring Kadija Ferryman

The New York Times (essay) | DECEMBER 13, 2024

A broken system is no excuse
Authored by Travis Rieder

Baltimore Banner | DECEMBER 13, 2024

Killing of UnitedHealthcare CEO unites people ... against insurance companies
Featuring Mario Macis

Associated Press | DECEMBER 5, 2024

Words on ammo in CEO shooting echo common phrase on insurer tactics: Delay, deny, defend
Featuring Mario Macis

Lexington Herald Leader | OCTOBER 22, 2024

Woman gave birth to stillborn after Central KY jail denied her medication, lawsuit says
Featuring Carolyn Sufrin

Just Security (commentary) | OCTOBER 22, 2024

Physicians and the push for accountability for alleged abuse of Gazan prisoners detained by Israel
Co-authored by Len Rubenstein

Washington Post | OCTOBER 19, 2024

Fatal overdoses often happen when users are alone. Hotlines, sensors can save lives
Featuring Travis Rieder

Association of Health Care Journalists' Health Beat | OCTOBER 14, 2024

A sickle cell drug that was hyped in headlines is now suspected of harming patients
Featuring Yoram Unguru

Johns Hopkins Medicine Magazine | OCTOBER 3, 2024

Thorny Issues
Featuring Jeffrey Kahn (featured guest)

The Atlantic | OCTOBER 8, 2024

They were made without eggs or sperm. Are they human?
Featuring Jeremy Sugarman

Scientific American | SEPTEMBER 17, 2024

Why is it so much harder for NASA to send people to the moon now than it was during the Apollo era?
Featuring Jeffrey Kahn

Cancer Discovery News | SEPTEMBER 9, 2024

Tackling persistent pediatric cancer drug scarcity
Featuring Yoram Unguru

The Baltimore Sun (commentary) | AUGUST 4, 2024

Commentary: We can't permit child gun deaths to be the status quo
Co-authored by Rebecca Seltzer

STRATEGIC HEALTH CARE LEADER MICHAEL NOTTIDGE, MD, JOINS NATIONAL ADVISORY BOARD



Michael Nottidge, MD, MPH, MBA, a seasoned physician executive and strategic health care leader with a career spanning frontline clinical practice, health system transformation, and public health innovation, joined the Berman Institute's National Advisory Board in 2025. Currently serving as National Medical Director for Contessa Health (an Amedisys company), Dr. Nottidge leads national medical strategy and clinical quality efforts for one of the country's largest integrated care-at-home platforms. Under his leadership since 2021, Contessa's hospital-at-home and post-acute models have scaled across health systems, enhancing clinical outcomes, improving provider workflows, and creating measurable value for health plans and partners.

A board-certified critical care and emergency medicine physician, Dr. Nottidge draws on years of bedside experience, including service as Medical Director of Critical Care at TriStar Centennial Medical Center—a major regional referral center in Middle Tennessee. During his tenure, he established and expanded the intensivist service line across cardiovascular, extracorporeal membrane oxygenation (ECMO), and broader critical care services.

Dr. Nottidge's work is grounded in a deep commitment to patient safety, public health, and equitable care delivery. He completed his MPH at the Bloomberg School of Public Health, where he helped revitalize the African Public Health Network and served on the Academic Standards Committee. He trained in emergency medicine and subsequently in critical care medicine at the Johns Hopkins Hospital and School of Medicine, where he was also named an Inaugural Tanger Patient Safety Fellow at the Center for Innovation in Quality Patient Care.

Blending clinical acumen with operational and strategic expertise, Dr. Nottidge is passionate about building models of care that are clinically rigorous, financially sustainable, and centered on patient dignity. He continues to advise health system and policy leaders on topics including hospital-at-home strategy, clinical workforce transformation, and the integration of AI and automation in care delivery.

VOLUNTEER LEADERSHIP SPOTLIGHT: LEE-LEE ELLIS



Lee-Lee Ellis, PhD, remembers earning her doctoral degree from Johns Hopkins as bittersweet. She was proud to enter the alumni community but knew she would miss the Berman Institute, a place that shaped her views on ethical practices and policies relevant to human health and well-being. Eager to stay connected, she welcomed the opportunity to join the Institute's National Advisory Board, which provides strategic guidance and support for the institute.

"I'm invested in the work of bioethics. Joining the advisory board

was a perfect way to marry my interest in bioethics and my desire to be engaged in the alumni community," said Ellis, who received a PhD in Health, Policy, and Bioethics in 2015.

"We need institutions like the Berman Institute that not only study ethics but are actively guiding real-world policy, bringing solutions to the table. The Berman Institute is a global thought leader. It's meaningful to still be a part of it."

Ellis shared her thoughts about her volunteer role, the importance of bioethics, and other ways she's giving back to the Berman Institute.

HOW DID YOUR EDUCATION AT THE BERMAN INSTITUTE IMPACT YOUR CAREER?

It influences my work. Most recently, I was in health policy working on physician payment issues and Medicare policy. I believe ethics underpins a lot of our decision-making when it comes to policy.

When we're trying to think of

what is a fair policy, what are our priorities? Are we thinking about health equity? Are we thinking about unintended consequences? All those kinds of ethics questions are percolating in the background.

I'm able to organize my thoughts and apply ethics principles because of my training at the Berman Institute. I use it every day, not just in my work, but also as a parent and as a member of society. I'm grateful for that training.

YOU JOINED THE BERMAN INSTITUTE'S NATIONAL ADVISORY BOARD IN 2022, AND YOU'RE CURRENTLY CHAIR OF THE ALUMNI SUBCOMMITTEE. WHAT DREW YOU TO ALUMNI ENGAGEMENT?

Giving my time back to the Berman Institute and specifically focusing on alumni relations efforts was my way of investing in the next generation of students. Alumni want to stay connected to the work at the institute and to their fellow classmates. They also want to connect with alumni from the

various programs and cohorts.

The alumni committee has been doing great programming. It's valuable to receive perspectives from people in different sectors working on different bioethics issues and who are in different stages of their career. We've started an alumni summit, a once-a-year event where we bring together alumni. This year we had a former Berman Institute Hecht-Levi Fellow speak about ethics in unprecedented times of uncertainty.

Since our alumni community is geographically spread out, we have also launched a virtual research retreat, where alumni present their work and receive feedback from their peers.

IN ADDITION TO VOLUNTEERING, YOU ALSO SUPPORT THE BERMAN INSTITUTE ANNUAL FUND. WHY IS THIS IMPORTANT TO YOU?

The Berman Institute needs public and alumni support to continue doing its work, especially now when we're seeing real threats to

academic institutions and the potential for cuts to government funding and important projects. There's a real space for people like me to contribute what they can to ensure that the work continues and is strengthened.

To be in a position to help educate the next generation of students who will continue to shape policy and tackle questions is so important—because we often see technology or advancements get ahead of the ethics, and we're sometimes playing catch-up.

WHAT DO YOU HOPE YOUR VOLUNTEER EFFORTS AND PHILANTHROPIC GIFTS ACHIEVE?

The Berman Institute has a long list of priorities that I fully support in terms of training, supporting clinical ethics, and the iDeas Lab. The various priorities align very well with the annual fund and the work the Berman Institute is doing.

I wasn't anticipating how incredible it would be to join the advisory board and to serve with

others who have been involved with the Berman Institute for a long time. We all feel the connection to the Institute or to bioethics. I have such an opportunity to learn from those who are giving back to Hopkins and who are invested in the Berman Institute. It's been an unexpected reward for me to be part of this incredible group of thought leaders, volunteers, and philanthropists.

NATIONAL ADVISORY BOARD

The Berman Institute's National Advisory Board provides strategic guidance and support for the Institute and its work.

- Alexander H. Levi, PHD
CHAIR
- John Wilkerson, PHD
CHAIR, EXECUTIVE COMMITTEE
- Liza Bailey
- George Lloyd Bunting, JR.
- Caroline Bagley Burnett, SCD, RN
- Bhaskar Chaudhuri, PHD
- Andrew Cohen
- Barry S. Collier, MD
- Lynn Deering*
- Andreas C. Dracopoulos
- Lee-Lee Ellis, PHD '15
- Roger Faxon
- Elaine Freeman
- David Goldsteen, MD
- Margaret Conn Himelfarb, MPH BSPH '04
- Patricia A. King, ESQ.
- Sylvia Morris, MD, MPH, BSPH '97
- Fredric S. Newman, ESQ.
- Michael Nottidge, MD, MPH, BSPH '03
- Morris W. Offit
- Laura Parsons, PSYD
DEVELOPMENT COMMITTEE
- Michelle Rosenbloom, MD*
- Ford Rowan, DPA*
- Amy Engel Scharf '90
CO-CHAIR, MEMBERSHIP AND NOMINATIONS COMMITTEE
- Charles Scheeler, ESQ.
CO-CHAIR, MEMBERSHIP AND NOMINATIONS COMMITTEE
- Maxwell Thanhouser
- Reed V. Tuckson, MD, FACP
- Jay Wagley

* EMERITUS MEMBER

2024-2025 DONORS

- Anonymous
- Robert P. Albano
- Joseph Ali
- Alex Aus
- Jie Bai
- Liza Bailey and Michael Musgrave
- Esther Becker
- Lewis Becker
- Tricia Renee Bennett
- Susan and Alain Bertoni
- Amanda Bewley
- BHA Automobile Museum
- Richard and Kathleen Bonnie
- Richard Michael Braverman
- George and Annegard Bunting
- Caroline Burnett
- Ian Butler
- Gabriella Calicchio
- Beth and Hugh Calkins
- Michele Canapp
- Joseph Carrese and Michele Beaulieu
- Kai Chan
- Bhaskar and Aulera Chaudhuri
- Andrew and Suzi Cohen
- Barry and Barbara Collier
- Renita L. Collins
- Deidra Crews
- The Charles A. Dana Foundation
- Peggy Danziger
- Rachel Lauren Derr
- Neal Dickert
- Sara DiFilippo
- Andreas Dracopoulos
- Julie Drotz
- Joan and Robert Easton
- Lee-Lee Ellis
- Ruth Faden and Tom Beauchamp
- Roger and Amy Faxon
- Conrad Fischer
- Joy Fish
- Thomas and Charlene Flygt
- Elaine Freeman
- Lance and Kineret Gable
- Martha Aguilar Garagorri and Jaime Porras Morales
- Susan Gauvey
- Sandra Gerstung
- Patricia Goldberg Gilison
- David Goldsteen and Marcia Cohodes
- The Greenwall Foundation
- Alyssa Harant
- Karen Harrop
- Cui He
- Michele Hecht
- Robert Hecht
- Stephen Hecht
- The Hecht-Levi Foundation
- Margot Heller
- Katrina Hemmons
- Lee M. Hendler
- Maria Heyszel
- Margaret and Richard Himelfarb
- Lorraine Hirsch
- Jeannette Hobbins
- Mark and Elizabeth Hughes
- Elizabeth Jaffee
- Michael Janes
- Sunghee Jin
- Amy and Timothy Jones
- Jeffrey and Orlee Kahn
- Carol and Darius Kanga
- Nancy Kass and Sean Tunis
- The Kavli Foundation
- Liliane and Joseph Katz
- Joanne and John Kean
- Kai Keasey
- David Kern
- Patricia King
- Andrew and Julie Klingenstein
- The Laurie M. Tisch Illumination Fund
- Alexander and Victory Levi
- Richard Levi
- The Levi Fund
- Diane and David Levine
- Bonnie and Melvin Levy
- Gayle Levy and Marty Barber
- Anna Lin
- Elizabeth Luedtke
- Bill and Diane Marimow
- Lester Martinez-Lopez
- Mohammad Matinfar
- John and Jennifer McAninley
- Maria Merritt
- The Harvey M. Meyerhoff Fund, Inc.
- Joseph and Harvey Meyerhoff Family Charitable Funds
- The Lyn P. Meyerhoff Foundation
- Phyllis Meyerhoff
- Robert E. Meyerhoff
- David Meyers and Roberta Strickler
- Jaime Porras Morales
- Christine Morfit
- Sylvia Morris
- Elizabeth Moser
- David and Kimberly Mullarkey
- Mitchell Nadel
- Fred and Mary Newman
- Jin Ni
- The Nuffield Foundation
- Morris and Nancy Offit
- Laura and Richard Parsons
- Jill and David Paulson
- Sharon and Stuart Campbell Ray
- Helene Reps
- Jane Riley
- Kathleen Rodger
- Barbara Rosenberger
- Maneesha Sakhuja
- Amy and Charles Scharf
- Charles Scheeler and Mary Pease
- Jadwiga and Marc Sebrechts
- Seefisch Productions
- Jodi Beth Segal
- Leonard Shaver
- Eric and Susan Sheinberg
- Aaron Sherber
- Dalia Ghassan Shlash
- Mary Shoemaker
- Andrew Siegel
- Hunter Jackson Smith
- Guru Srinivasan
- Stavros S. Niarchos Foundation
- Earl Phillip Steinberg and Claire E. Reade
- Jeremy Sugarman
- Mehdi Taeb
- Peter Terry and Joan Salim
- Mary Kay Troester
- Reed and Margie Tuckson
- Jay and Sue Wagley
- Joanne and Edward Wallach
- Jennifer Walther
- Katherine Wheeler
- John and Barbara Wilkerson
- Leslie Wolf
- Na Yoon
- Yi You
- Sammy Zakaria
- Kathryn Zaletel
- Ali Zeidan

HELPING SHAPE A BRIGHT FUTURE



A gift from your will, trust, or retirement plan will help ensure that the Berman Institute can continue to prepare the next generation of leaders in bioethics. Retirement assets can also be used to fund a gift that will pay you income for life.

To learn more, contact the Berman Institute's Deanna Figiel, Senior Director of Development, at **443-801-3725** or **dfigiel1@jhu.edu**.

Johns Hopkins

Berman Institute of Bioethics

Deering Hall

1809 Ashland Avenue

Baltimore, Maryland 21205

PHONE: 410-614-5550

EMAIL: Bioethics@jhu.edu

WEBSITE: Bioethics.jhu.edu

 [Facebook.com/Bermaninstitute](https://www.facebook.com/Bermaninstitute)

 [@Bermaninstitute](https://twitter.com/Bermaninstitute)

 [Youtube.com/Bermaninstitute](https://www.youtube.com/Bermaninstitute)



JOHNS HOPKINS
BERMAN INSTITUTE
of BIOETHICS

30
YEARS

